

ADDENDUM NUMBER 1
NORTH FRANKLIN VISITOR'S CENTER CONNELL, WA
PROJECT NO. E20-10
July 31, 2020

Bids Due: 10:00 AM, August 11, 2020

The following addendum is hereby issued and made a part of the specifications for the North Franklin Visitor's Center Connell, WA project.

- 1) Addendum #01 dated 7/30 as issued by Wave Design Group. Issuance of revised drawings.

NOTICE is hereby given that this addendum must be signed and enclosed with the sealed bid for the North Franklin Visitor's Center Connell, WA as evidence that the bidder has familiarized himself with all changes incorporated herein.

Name of Bidder Company

Signature

Printed Name



Tracy Friesz
Facilities Engineer

DOCUMENT – ADDENDA #01

1.1 PROJECT INFORMATION

- A. Project Name: North Franklin Visitor's Center - Renovation
- B. Owner: Port of Pasco
- C. Architect: Wave Design Group, Michael A. Corbin, AIA
- D. Architect Project Number: 20-011
- E. Date of Addendum: July 30, 2020.

1.2 NOTICE TO BIDDERS

- A. This Addendum serves to clarify, revise, and supersede information in the Project Manual, Drawings, and previously issued Addenda. Portions of the Addendum affecting the Contract Documents will be incorporated into the Contract by enumeration of the Addendum in the Owner/Contractor Agreement.
- B. The Bidder shall acknowledge receipt of this Addendum by signing Addendum and including signature sheet with bid.
- C. The date for receipt of bids has **NOT** changed from previously stated.

1.3 ATTACHMENTS

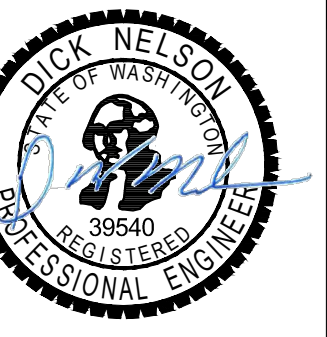
- A. This Addendum includes the following attached Sheets:
 - 1. Structural Sheets for Visitor's Center, dated, July 30, 2020.
 - a. S-101 Structural Foundation Plan
 - b. S-501 Typical Concrete Details
 - 2. Architectural Sheets for Visitor's Center, dated, July 30, 2020
 - a. A-011 Demolition Floor Plan
 - b. A-013 Demolition Building Elevations
 - c. A-101 Site Plan
 - d. A-111 Main Level Floor Plan
 - e. A-201 Building Elevations
 - f. A-311 Wall Sections
 - g. A-501 Exterior/Interior Details
 - h. A-601 Door and Window/Relite Schedule

END OF DOCUMENT

ADDENDA

NOTE:

1. SEE SHEET G-001 FOR GENERAL NOTES
2. SEE SHEET S-002 FOR ABBREVIATIONS



July 30, 2020 - 04:25 PM

THIS DESIGN IS THE PROPERTY OF WAVE DESIGN GROUP, INC. ©2020. REPRODUCTION IN PART OR WHOLE, WITHOUT THE EXPRESS WRITTEN CONSENT OF WAVE DESIGN GROUP, INC. WILL RESULT IN PROSECUTION TO THE FULLEST EXTENT OF THE LAW. ANY AND ALL CHANGES, REVISIONS, CLARIFICATIONS, ETC. TO THESE DOCUMENTS, IN ANY WAY, WILL BE PROVIDED BY WAVE DESIGN GROUP, INC. THE DRAWINGS CONTAINED HEREIN ARE THE SOLE PROPERTY AND RESPONSIBILITY OF WAVE DESIGN GROUP, INC.

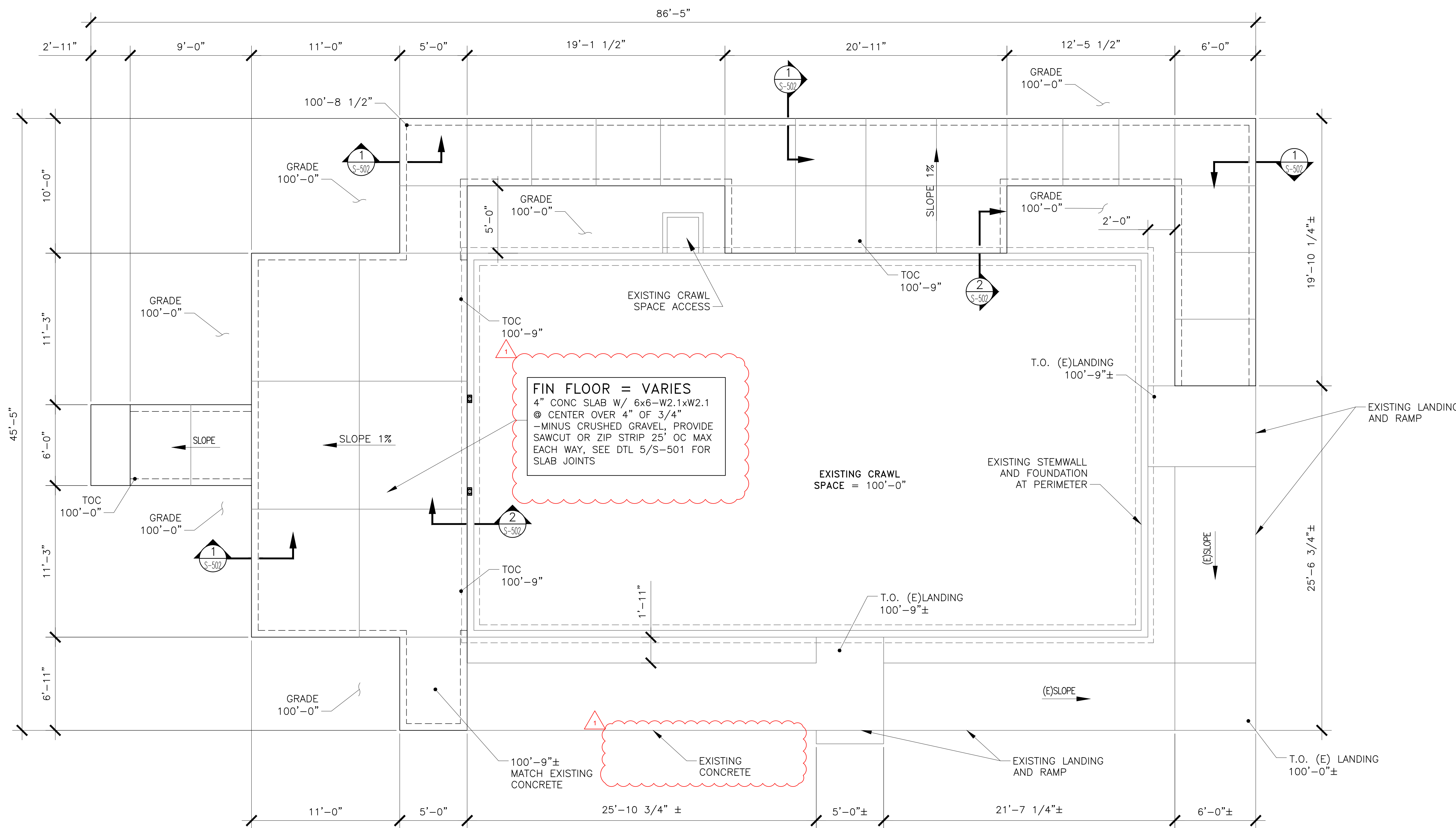
**CONNELL VISITOR CENTER
PORT OF PASCO**
661 S COLUMBIA AVE.
CONNELL, WA 99326



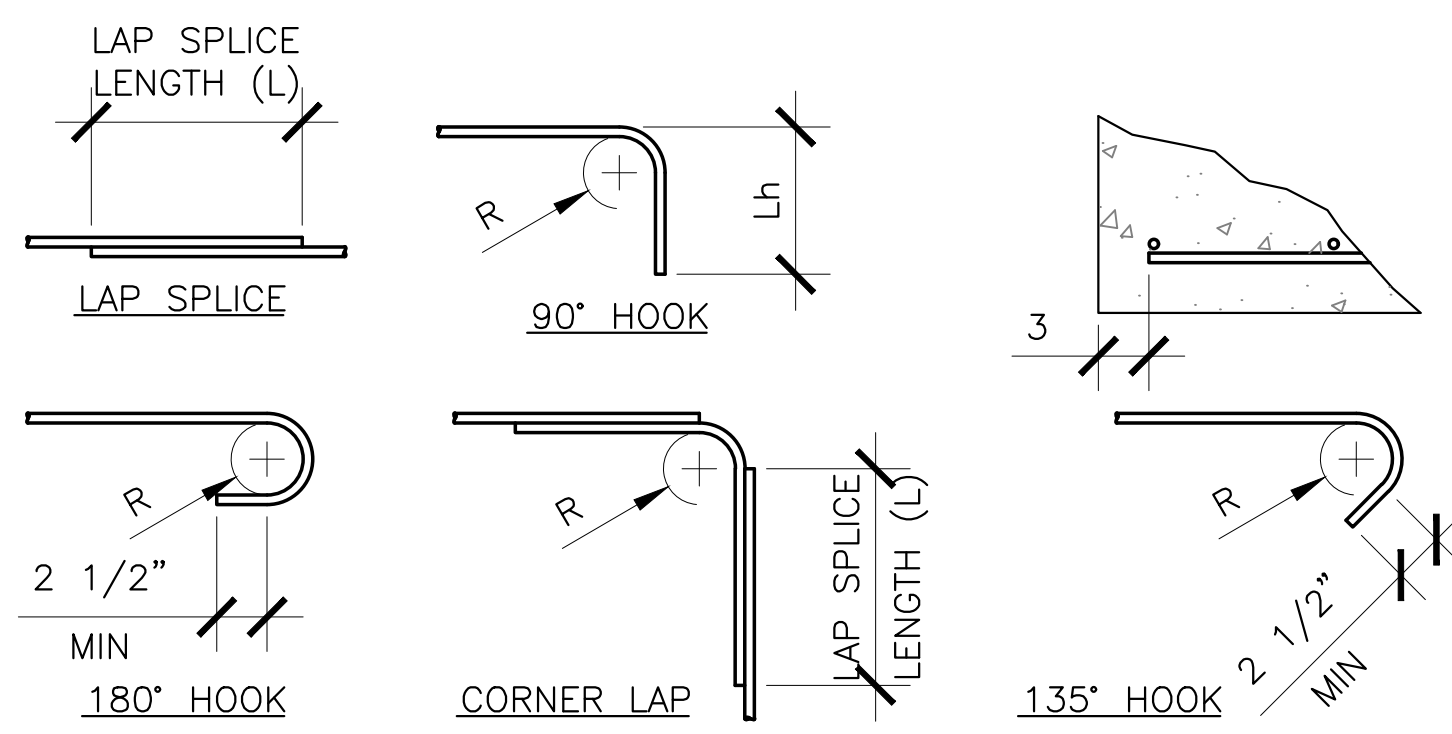
DATE	BY	DATE	REV. #
6-1-2020	HU	7-30-2020	1
	DWN		2
			3

STRUCTURAL
FOUNDATION
PLAN

SHEET NO.:
S-101



FOUNDATION PLAN
SCALE: 1/8" = 1'-0"



CONCRETE REINFORCING BAR SCHEDULE

BAR SIZE	LAP SPLICES L		HOOKS		CORNER BAR	
	SLAB ON GRADE	OTHERS	R	Lh	R	L
#3	20"	19"	1 1/8"	6"	1 1/8"	19"
#4	25"	25"	1 1/2"	8"	1 1/2"	25"
#5	32"	31"	1 7/8"	10"	1 7/8"	31"
#6	38"	37"	2 1/4"	12"	2 1/4"	37"
#7	55"	54"	2 5/8"	14"	2 5/8"	54"
#8	63"	61"	3"	16"	3"	61"
#9	63"	61"	3"	16"	3"	61"

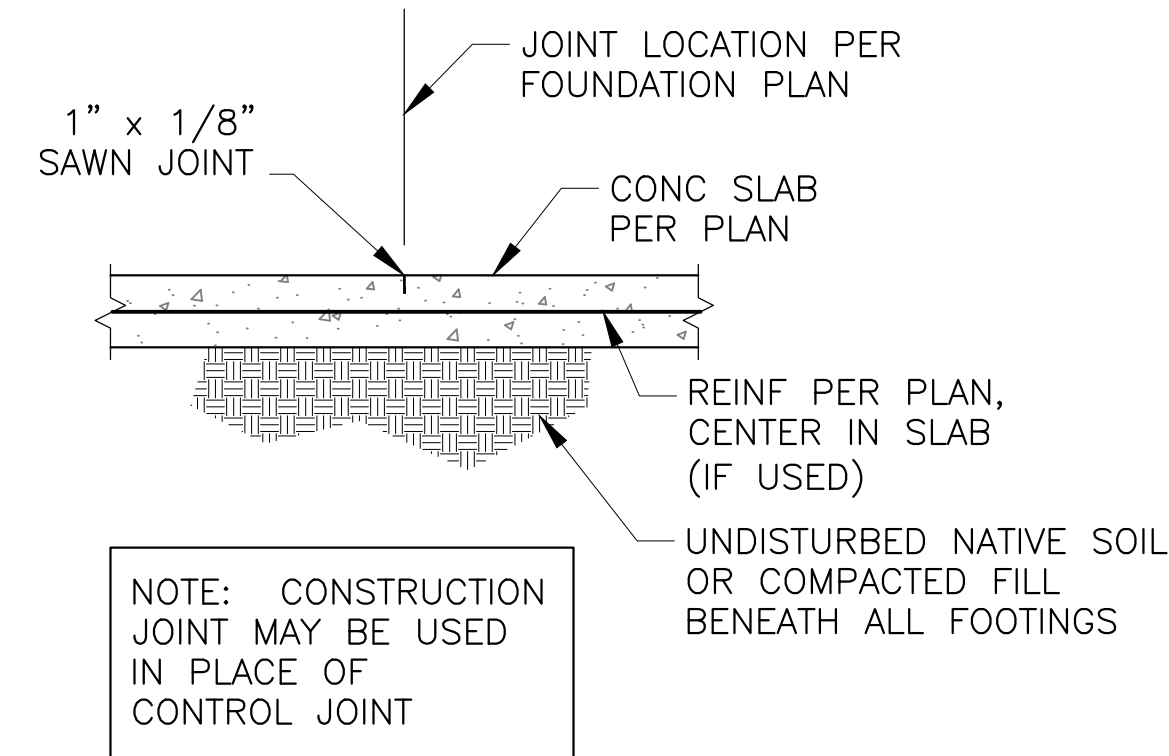
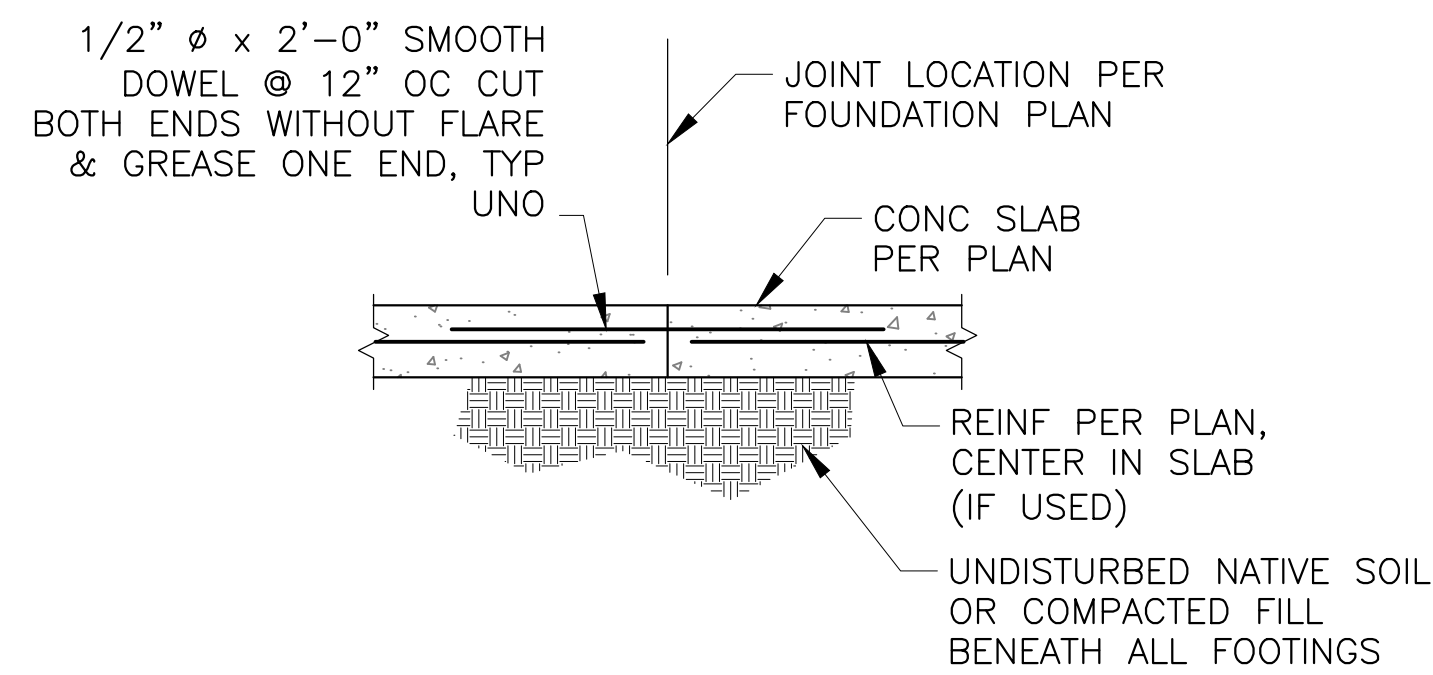
- LENGTHS ARE BASED ON ACI 318 FOR $f'_c = 2500\text{psi}$ EXCEPT FOR SLABS ON GRADE WHICH IS BASED ON 4000psi .
- LENGTHS ARE BASED ON CLASS B SPLICES, STAGGERING OF SPLICES IS NOT REQUIRED.

1 STANDARD BAR BENDS

SCALE: NOT TO SCALE

2 NOT USED

SCALE: NOT TO SCALE



4 CONSTRUCTION JOINT

SCALE: 3/4" = 1'-0"

5 CONTROL JOINT

SCALE: 3/4" = 1'-0"

$f'_c = 2500\text{ psi}$				$f'_c = 3000\text{ psi}$			
BAR SIZE	LAP CLASS	LENGTH (INCHES)		BAR SIZE	LAP CLASS	LENGTH (INCHES)	
		TOP BARS	OTHER BARS			TOP BARS	OTHER BARS
#3	A	24	18	#3	A	22	17
	B	31	24		B	28	22
#4	A	32	24	#4	A	29	22
	B	41	32		B	38	29
#5	A	39	30	#5	A	36	28
	B	51	39		B	47	36
#6	A	47	36	#6	A	43	33
	B	61	47		B	56	43
#7	A	55	42	#7	A	50	39
	B	71	55		B	65	50
#8	A	63	48	#8	A	57	44
	B	82	63		B	75	57
#9	A	71	54	#9	A	65	50
	B	92	71		B	84	65
#10	A	78	60	#10	A	72	55
	B	102	78		B	93	72
#11	A	86	66	#11	A	79	61
	B	112	86		B	102	79

NOTES

- TABULATED VALUES ARE BASED ON GRADE 60 REINFORCING BARS AND NORMAL WEIGHT CONCRETE.
- TENSION DEVELOPMENT LENGTHS AND TENSION LAP SPLICE LENGTHS ARE CALCULATED PER ACI 318-14, SECTIONS 25.4.2 AND 25.5.2, RESPECTIVELY. TABULATED VALUES FOR BEAMS OR COLUMNS ARE BASED ON TRANSVERSE REINFORCEMENT AND CONCRETE COVER MEETING MINIMUM CODE REQUIREMENTS. LENGTHS ARE IN INCHES.
 - CASE 1 COVER AT LEAST $1.0d_b$ AND C.-C. SPACING AT LEAST $2.0d_b$.
 - CASE 2 COVER LESS THAN $1.0d_b$ OR C.-C. SPACING LESS THAN $2.0d_b$.
 - ALL OTHERS:
 - CASE 1 COVER AT LEAST $1.0d_b$ AND C.-C. SPACING AT LEAST $3.0d_b$.
 - CASE 2 COVER LESS THAN $1.0d_b$ OR C.-C. SPACING LESS THAN $3.0d_b$.
- CASES 1 AND 2, WHICH DEPEND ON THE TYPE OF STRUCTURAL ELEMENT, CONCRETE COVER, AND THE CENTER-TO-CENTER SPACING OF THE BARS, ARE DEFINED AS BEAMS OR COLUMNS:

LAP SPLICE LENGTHS ARE MULTIPLES OF TENSION DEVELOPMENT LENGTHS; CLASS A = $1.0l_d$ AND CLASS B = $1.3l_d$ (ACI 318-14, SECTION 20.5.2).

TOP BARS ARE HORIZONTAL BARS WITH MORE THAN 12 INCHES OF CONCRETE CAST BELOW THE BARS.

FOR LIGHTWEIGHT AGGREGATE CONCRETE, MULTIPLY THE TABULATED VALUES BY 1.3.

FOR EPOXY-COATED BARS, MULTIPLY THE TABULATED VALUES BY ONE OF THE FOLLOWING FACTORS

CONCRETE COVER AND SPACING	TOP BARS	OTHER BARS
COVER < $3.0d_b$ OR C.-C. SPACING < $7.0d_b$	$1.7/1.3 = 1.31$	1.50
COVER $\geq 3.0d_b$ OR C.-C. SPACING $\geq 7.0d_b$	1.20	1.20

ALL CALCULATIONS SHOWN ABOVE ARE ASSUMED TO BE CASE 2.

3 LAP SPLICE AND DEVELOPMENT LENGTH

SCALE: NOT TO SCALE



July 30, 2020 - 04:28 PM

THIS DESIGN IS THE PROPERTY OF WAVE DESIGN GROUP INC. © 2020. REPRODUCTION IN PART OR WHOLE WITHOUT THE EXPRESS WRITTEN CONSENT OF WAVE DESIGN GROUP, INC. WILL RESULT IN PROSECUTION TO THE FULLEST EXTENT OF THE LAW. ANY AND ALL CHANGES, REVISIONS, CLARIFICATIONS, ETC. TO THESE DOCUMENTS IN ANY WAY, WILL BE PROVIDED BY WAVE DESIGN GROUP INC. THE DRAWINGS CONTAINED HEREIN, ARE THE SOLE PROPERTY AND RESPONSIBILITY OF WAVE DESIGN GROUP, INC.

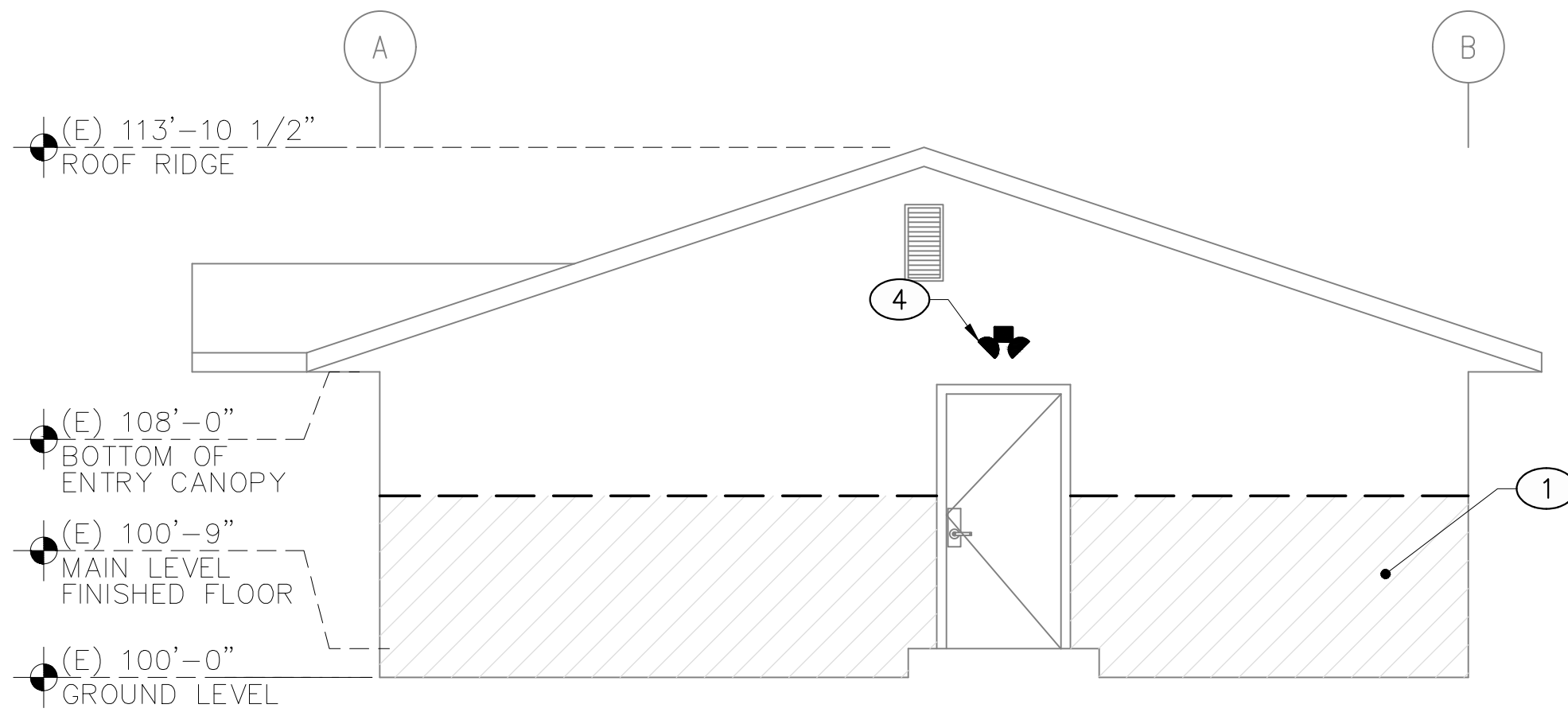
CONNELL VISITOR CENTER
 PORT OF PASCO
 661 S COLUMBIA AVE.
 CONNELL, WA 99326

WAVE DESIGN GROUP
 ARCHITECTURE • ENGINEERING • INTERIOR DESIGN
 418 N. Kellogg St., Ste. B • Kennewick, WA 99336

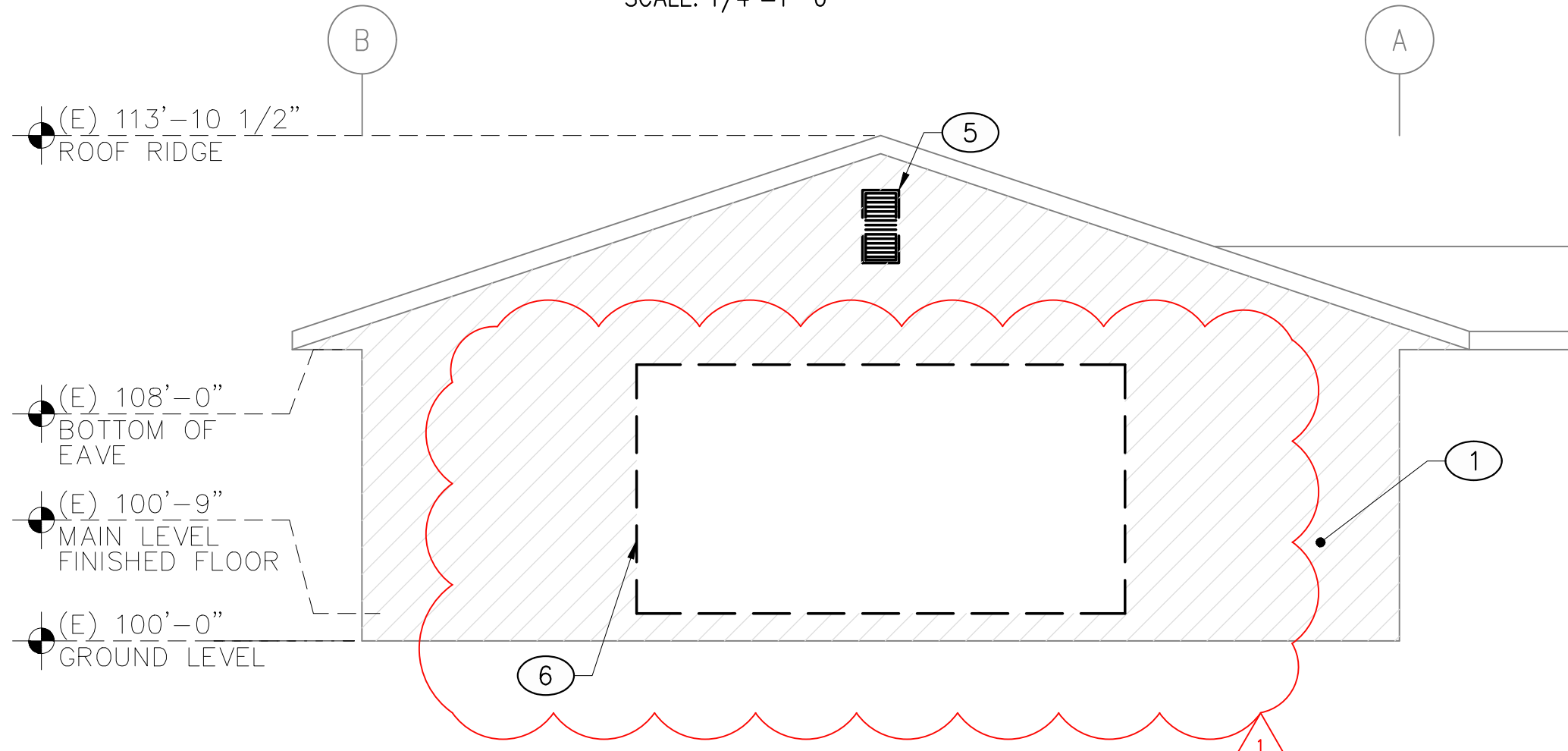
DATE:	BY:	CHKD:	JOB #:	CLINT:	1:	2:	3:
6-1-2020	HU	DWN	20-011				

TYPICAL CONCRETE DETAILS

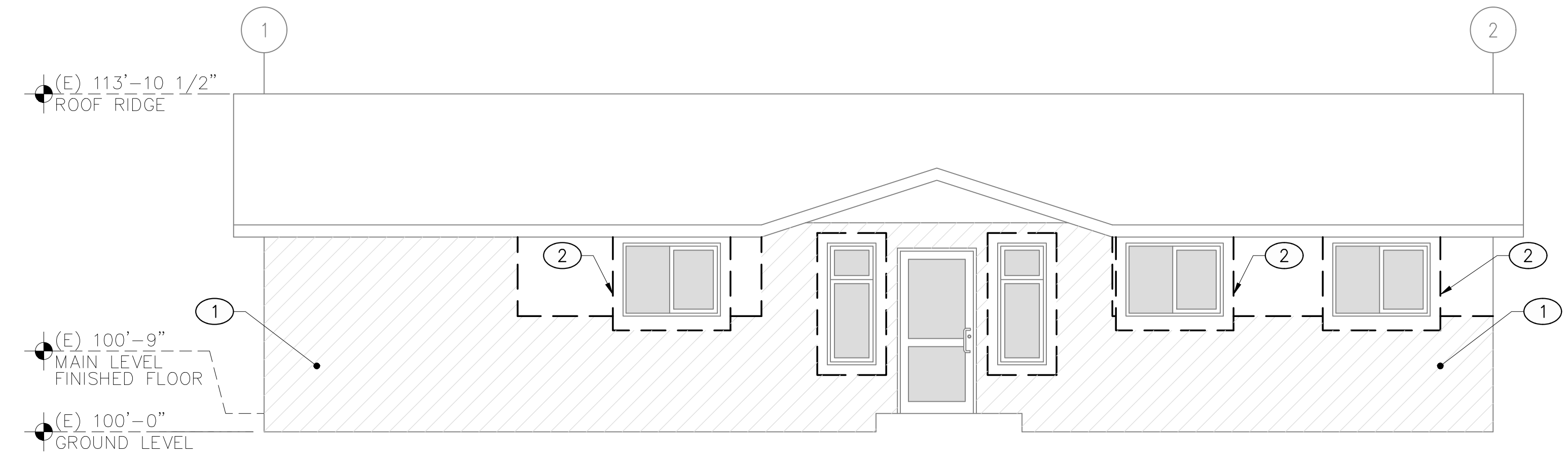
SHEET NO. :
S-501



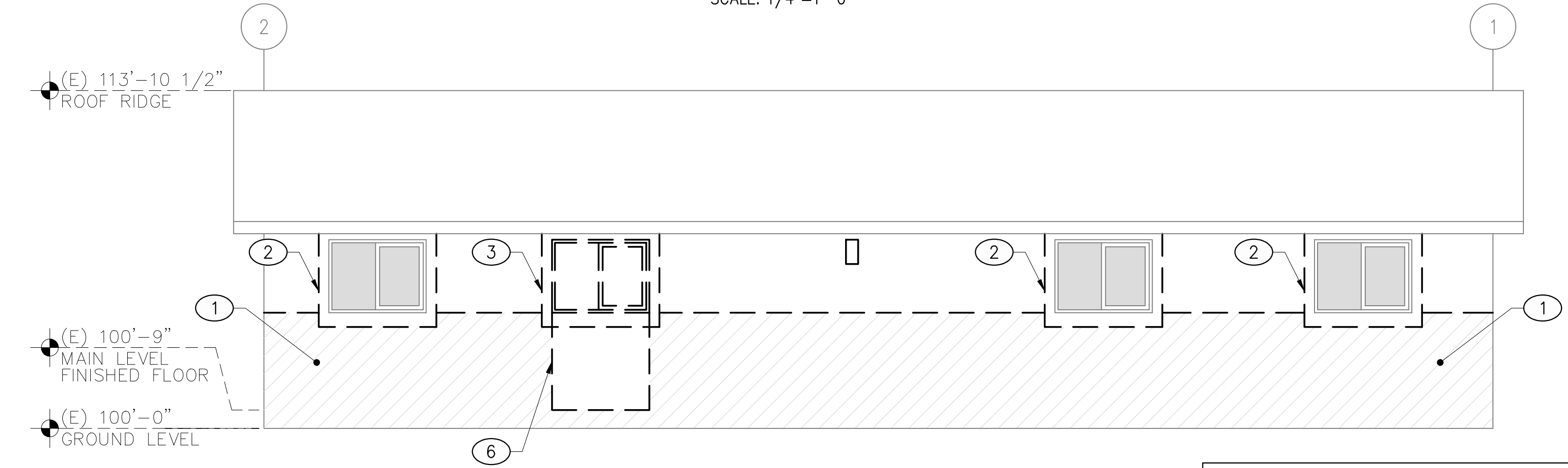
NORTH ELEVATION
SCALE: 1/4"=1'-0"



SOUTH ELEVATION
SCALE: 1/4"=1'-0"



EAST ELEVATION
SCALE: 1/4"=1'-0"



WEST ELEVATION
SCALE: 1/4"=1'-0"

DEMO FLOOR PLAN - LEGEND:

ITEM	DESCRIPTION
[Solid Line]	EXISTING TO REMAIN
[Dashed Line]	INDICATES DEMOLISHED ITEM
(E)	EXISTING ITEM
[Hatched Area]	INDICATES STUCCO TO BE DEMOLISHED

DEMOLITION KEYNOTES:

①	DEMO/REMOVE (E) STUCCO FINISH TO EXTERIOR SHEATHING
②	DEMO/REMOVE (E) WINDOW TRIM
③	DEMO/REMOVE (E) WINDOW AND FRAME
④	DEMO/REMOVE (E) LIGHT FIXTURE
⑤	DEMO/REMOVE (E) ROOF VENT
⑥	DEMO/REMOVE (E) WALL FINISHES, FRAMING, AND ALL APPURTENANCES TO MAIN FLOOR LEVEL

DEMOLITION NOTES:

- PATCH AND REPAIR ALL EXISTING TO REMAIN SURFACES/CONDITIONS IF DAMAGED OR OTHERWISE AFFECTED BY THIS CONSTRUCTION. CONTRACTOR IS RESPONSIBLE FOR PROTECTING ALL COLUMNS AND REMAINING WALLS, ETC. FROM IMPACT DURING CONSTRUCTION
- CONTRACTOR TO FIELD VERIFY ALL CONDITIONS AND DIMENSIONS PRIOR TO BEGINNING CONSTRUCTION.
- CONTRACTOR IS RESPONSIBLE FOR SHORING AND TEMPORARY SUPPORTS REQUIRED DURING DEMOLITION AND CONSTRUCTION.
- GENERAL CONTRACTOR TO VERIFY CONDITION OF EXISTING EXTERIOR SHEATHING AFTER REMOVAL OF EXISTING FINISHES.
- GENERAL CONTRACTOR TO PROVIDE AN ALLOWANCE FOR REPLACEMENT OF 96 S.F. MAX OF SHEATHING BASED UPON CONDITION AT TIME OF REMOVAL.
-

8909 REGISTERED ARCHITECT
Michael A. Corbin
MICHAEL A. CORBIN
STATE OF WASHINGTON
July 30, 2020 - 04:32 PM

THIS DESIGN IS THE PROPERTY OF WAVE DESIGN GROUP, INC. ©2020. REPRODUCTION IN PART OR WHOLE, WITHOUT THE EXPRESS WRITTEN CONSENT OF WAVE DESIGN GROUP, INC. WILL RESULT IN PROSECUTION TO THE FULLEST EXTENT OF THE LAW. ANY AND ALL CHANGES, REVISIONS, CLARIFICATIONS, ETC. TO THESE DOCUMENTS, IN ANY WAY, WILL BE PROVIDED BY WAVE DESIGN GROUP, INC. THE DRAWINGS CONTAINED HEREIN ARE THE SOLE PROPERTY AND RESPONSIBILITY OF WAVE DESIGN GROUP, INC.

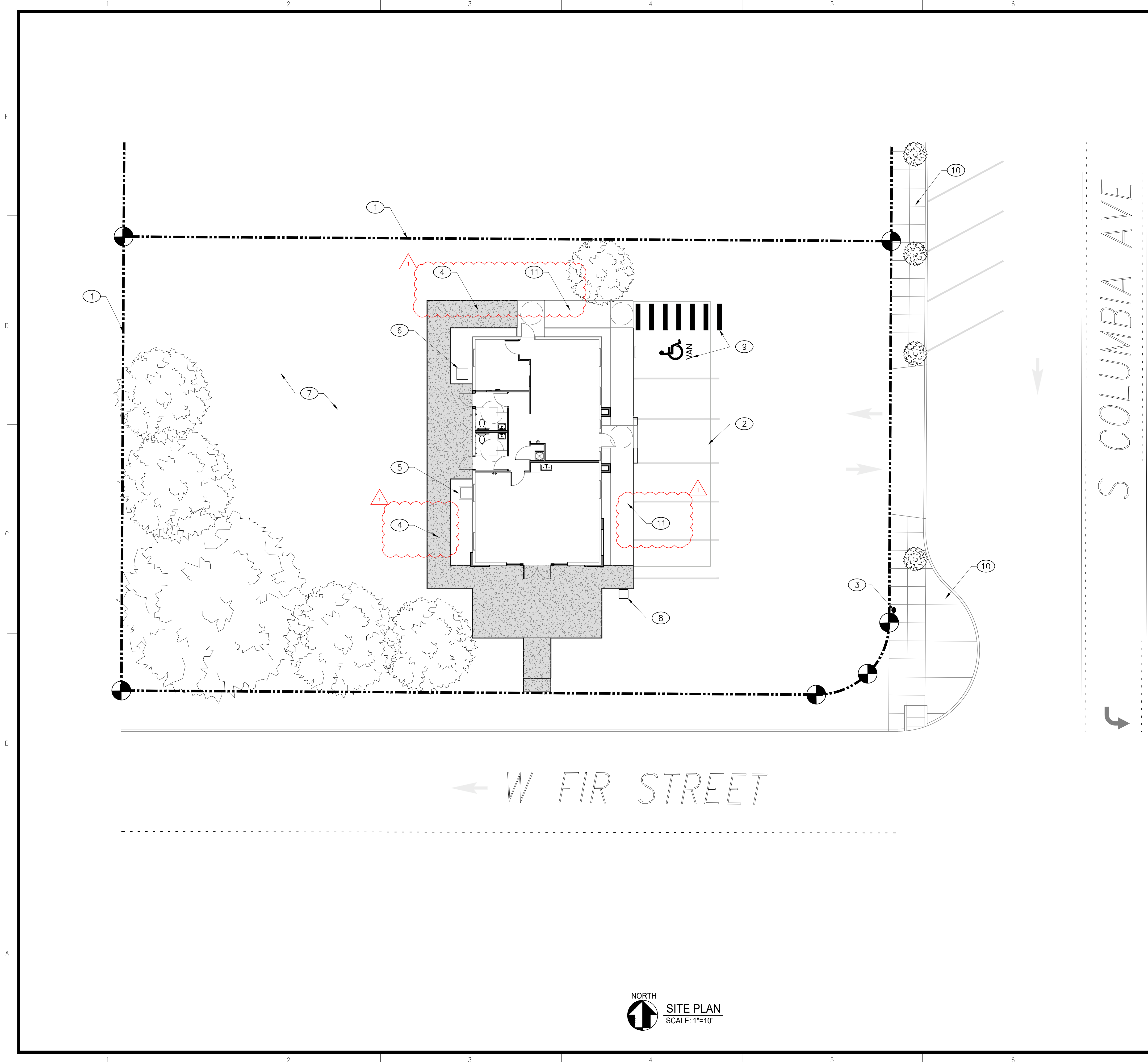
CONNELL VISITOR CENTER
PORT OF PASCO
661 S COLUMBIA AVE.
CONNELL, WA 99326

WAVE DESIGN GROUP
ARCHITECTURE • ENGINEERING • INTERIOR DESIGN
418 N. Kellogg St., Ste. B • Kennewick, WA 99336

REV. #	DATE	BY	DATE
1	7-30-2020	MG/KB	
2		MC	
3		MC	
4		MC	
5		MC	
6		MC	

DEMOLITION BUILDING ELEVATIONS

SHEET NO.:
A-013



KEYED NOTES:

①	PROPERTY LINE
②	EXISTING CONCRETE PAD
③	EXISTING FIRE HYDRANT
④	NEW CONCRETE SIDEWALK, SEE STRUCTURAL
⑤	EXISTING CRAWL SPACE ACCESS TO REMAIN
⑥	PROPOSED LOCATION ON NEW CONDENSING UNIT
⑦	EXISTING LANDSCAPING AND VEGETATION
⑧	FUTURE 24"X24" MONUMENT BULLETIN BOARD (NOT IN CONTRACT)
⑨	ADA VAN ACCESSIBLE PARKING SPOT WITH CROSSWALK STRIPING
⑩	EXISTING CITY SIDEWALK AND CURB
⑪	EXISTING CONCRETE

SITE PLAN LEGEND:

(X)	KEYNOTE
-----	---------

8809 REGISTERED ARCHITECT
Michael A. Corbin
 MICHAEL A. CORBIN
 STATE OF WASHINGTON
 July 30, 2020 - 04:29 PM

THIS DESIGN IS THE PROPERTY OF WAVE DESIGN GROUP, INC. ©2020. REPRODUCTION IN PART OR WHOLE, WITHOUT THE EXPRESS WRITTEN CONSENT OF WAVE DESIGN GROUP, INC. WILL RESULT IN PROSECUTION TO THE FULLEST EXTENT OF THE LAW. ANY AND ALL CHANGES, REVISIONS, CLARIFICATIONS, ETC. TO THESE DOCUMENTS, IN ANY WAY, WILL BE PROVIDED BY WAVE DESIGN GROUP, INC. THE DRAWINGS CONTAINED HEREIN ARE THE SOLE PROPERTY AND RESPONSIBILITY OF WAVE DESIGN GROUP, INC.

CONNELL VISITOR CENTER
 PORT OF PASCO
 661 S COLUMBIA AVE.
 CONNELL, WA 99326

WAVE
DESIGN GROUP
 ARCHITECTURE • ENGINEERING • INTERIOR DESIGN
 418 N. Kellogg St., Ste. B • Kennewick, WA 99336

DATE:	2-13-2020
BY:	MG/KB
CHKD:	MC
JOB #:	20-011
CLNT:	1:
	2:
	3:
REV. #	Δ
ADDDVD #1	
BY	
DATE	7-30-2020

SITE PLAN

SHEET NO.:
A-101

NORTH

 SITE PLAN
 SCALE: 1"=10'

FLOOR PLAN - LEGEND:

ITEM	DESCRIPTION
	EXISTING FRAMED WALL
	NEW FRAMED WALL, SEE ASSEMBLIES
	WALL ASSEMBLY CALLOUT
	2A:10B:C RATED FIRE EXTINGUISHER MOUNTED NO HIGHER THAN 40" A.F.F.
	DOOR KEYNOTE
	WINDOW KEYNOTE

NOTES:

- FOR GENERAL NOTES, SEE SHEET G-001 FOR MORE INFORMATION.

8909 REGISTERED ARCHITECT
Michael A. Corbin
 MICHAEL A. CORBIN
 STATE OF WASHINGTON
 July 30, 2020 - 04:33 PM

THIS DESIGN IS THE PROPERTY OF WAVE DESIGN GROUP, INC. © 2020. REPRODUCTION IN PART OR WHOLE, WITHOUT THE EXPRESS WRITTEN CONSENT OF WAVE DESIGN GROUP, INC. WILL RESULT IN PROSECUTION TO THE FULLEST EXTENT OF THE LAW. ANY AND ALL CHANGES, REVISIONS, CLARIFICATIONS, ETC. TO THESE DOCUMENTS, IN ANY WAY, WILL BE PROVIDED BY WAVE DESIGN GROUP, INC. THE DRAWINGS CONTAINED HEREIN, ARE THE SOLE PROPERTY AND RESPONSIBILITY OF WAVE DESIGN GROUP, INC.

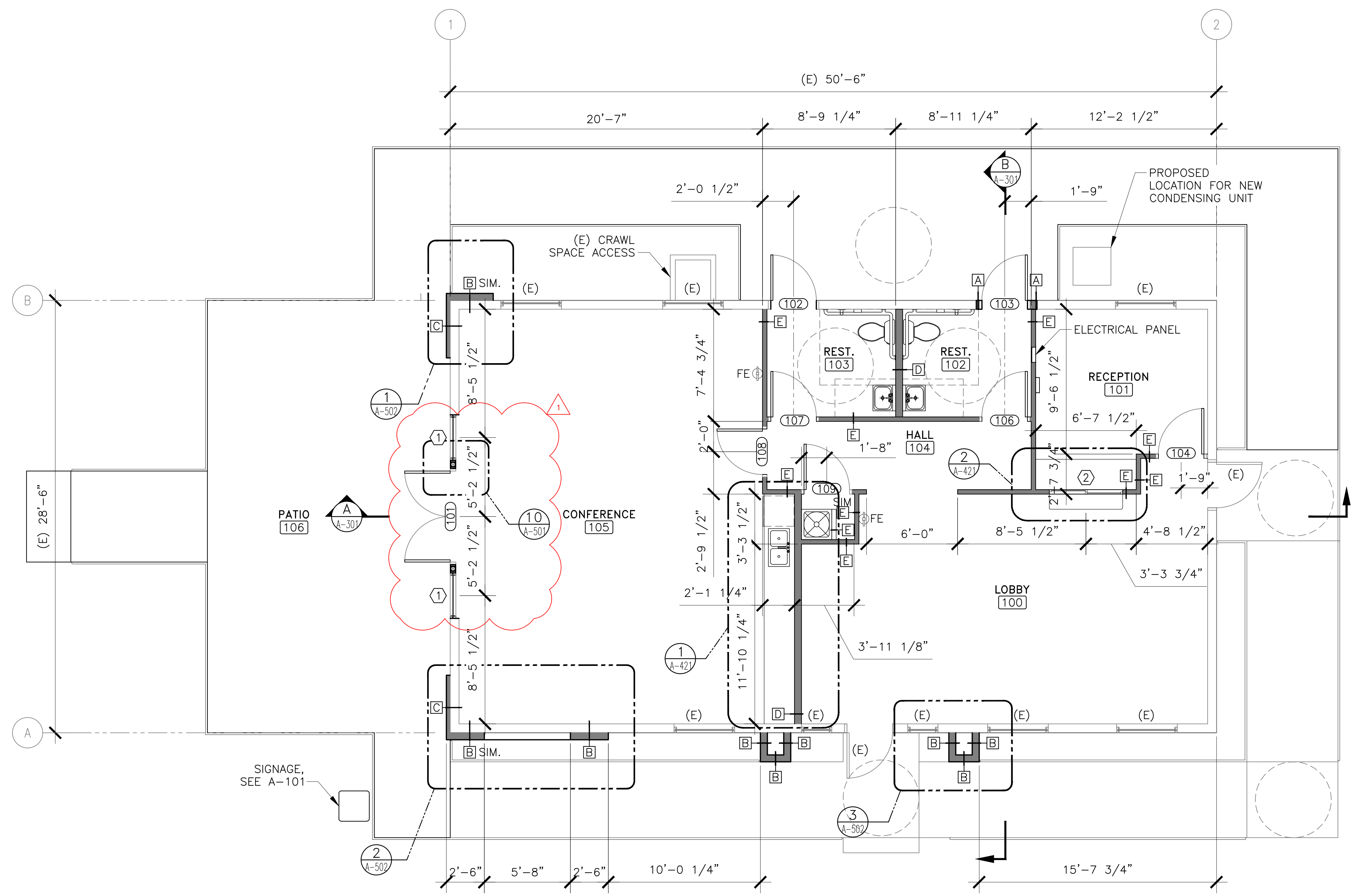
CONNELL VISITOR CENTER
 PORT OF PASCO
 661 S COLUMBIA AVE.
 CONNELL, WA 99326

WAVE
DESIGN GROUP
 ARCHITECTURE • ENGINEERING • INTERIOR DESIGN
 418 N. Kellogg St., Ste. B • Kennewick, WA 99336

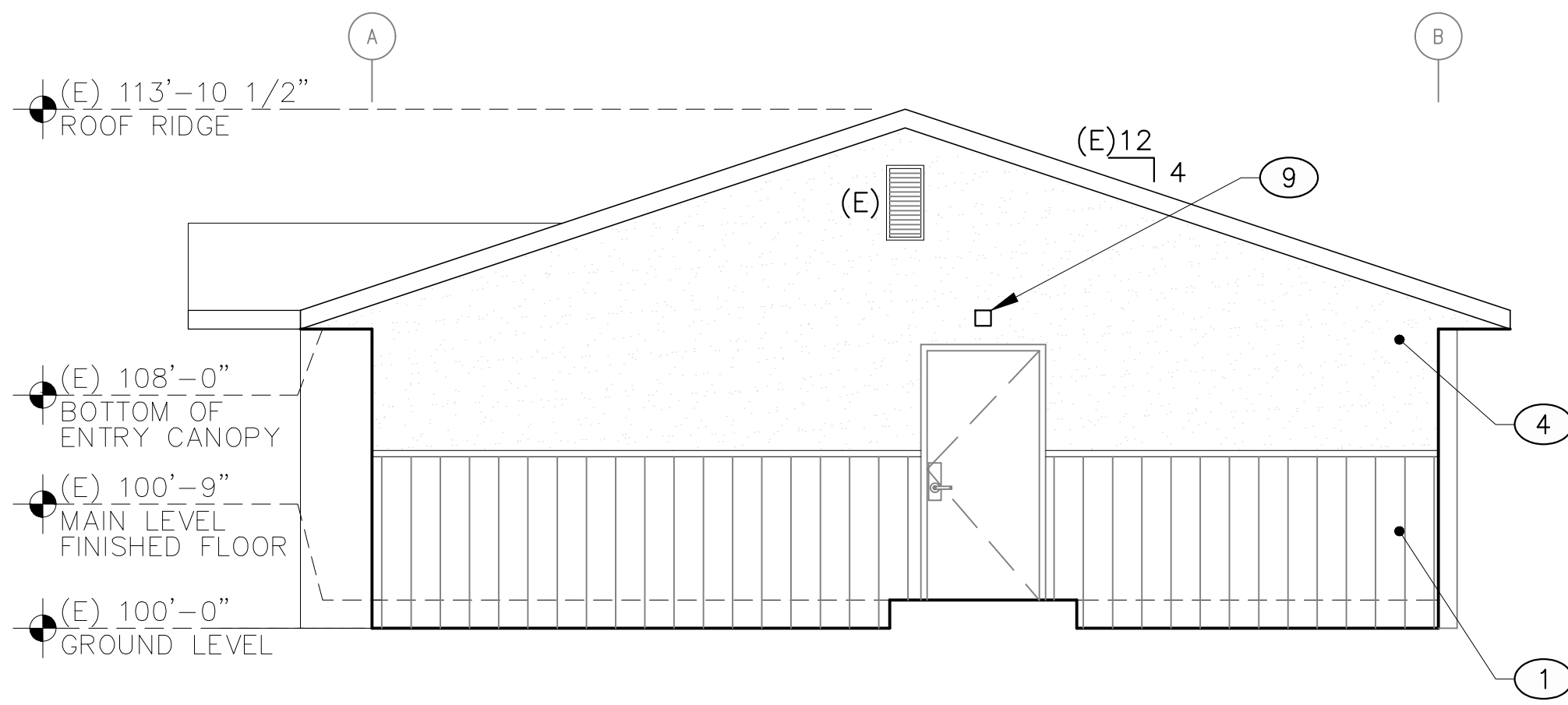
DATE	BY	DATE
2-13-2020	MG/KB	7-30-2020
BY: MG/KB	CHKD: MC	REV. #
JOB #: 20-011	CLNT:	1:
		2:
		3:

MAIN LEVEL FLOOR PLAN

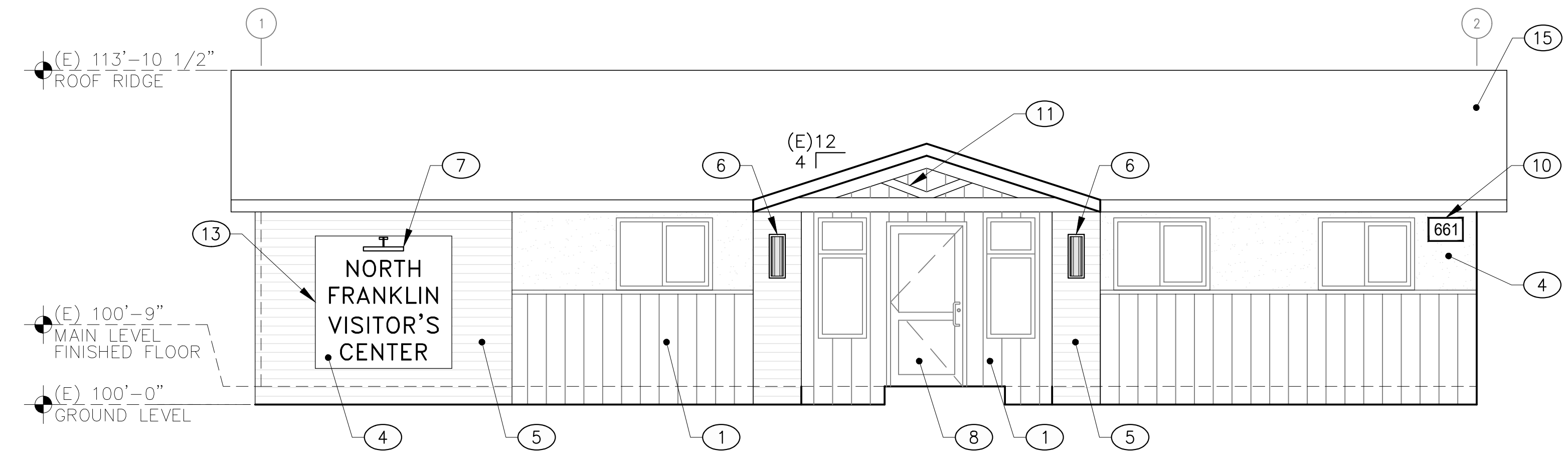
SHEET NO.:
A-111



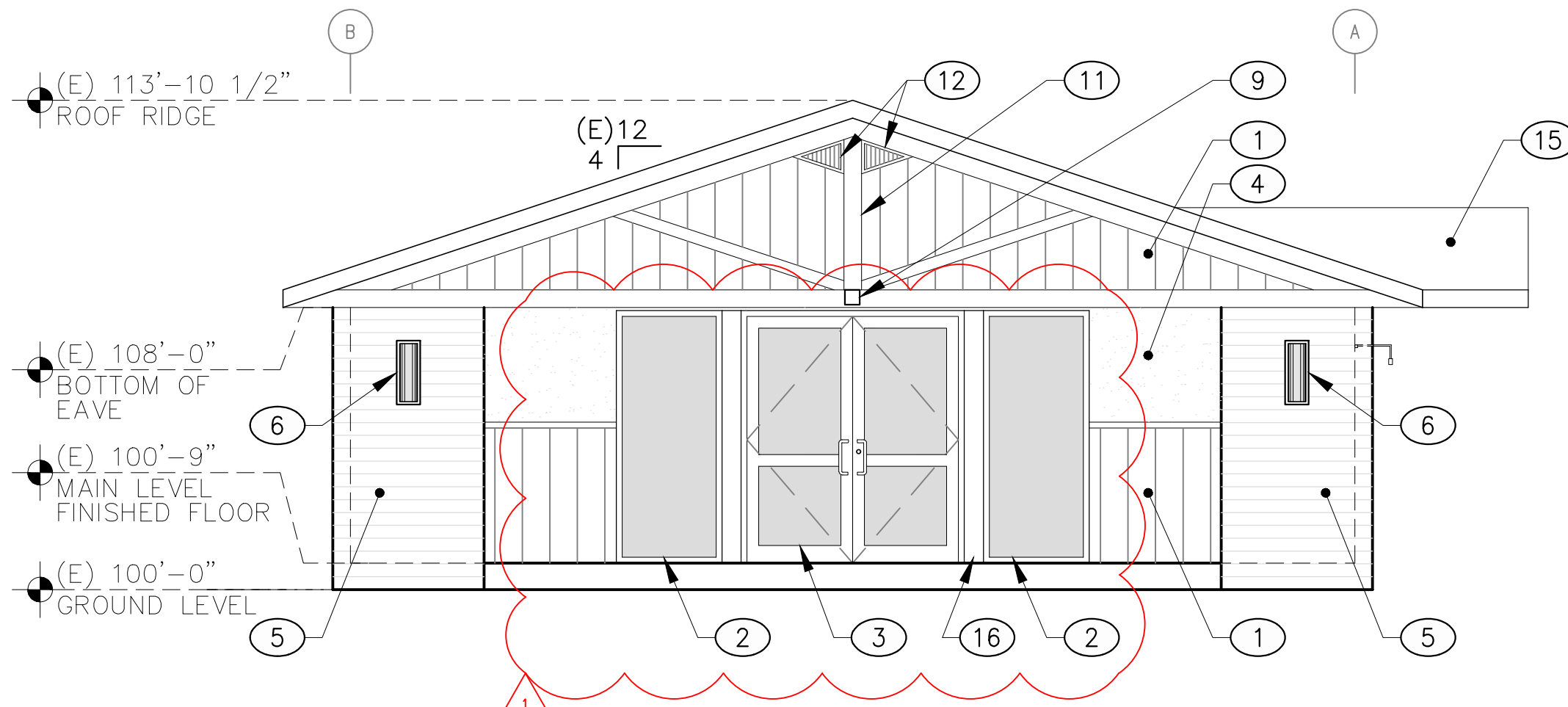
NORTH
1 MAIN LEVEL FLOOR PLAN
 SCALE: 1/4" = 1'-0"



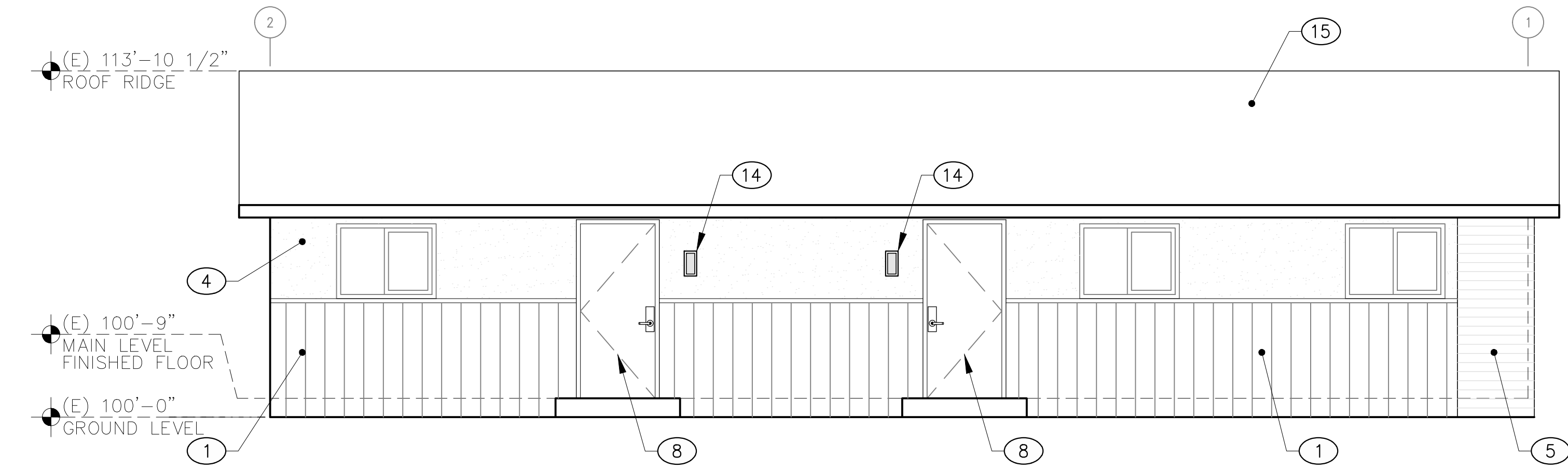
NORTH ELEVATION
SCALE: 1/4"=1'-0"



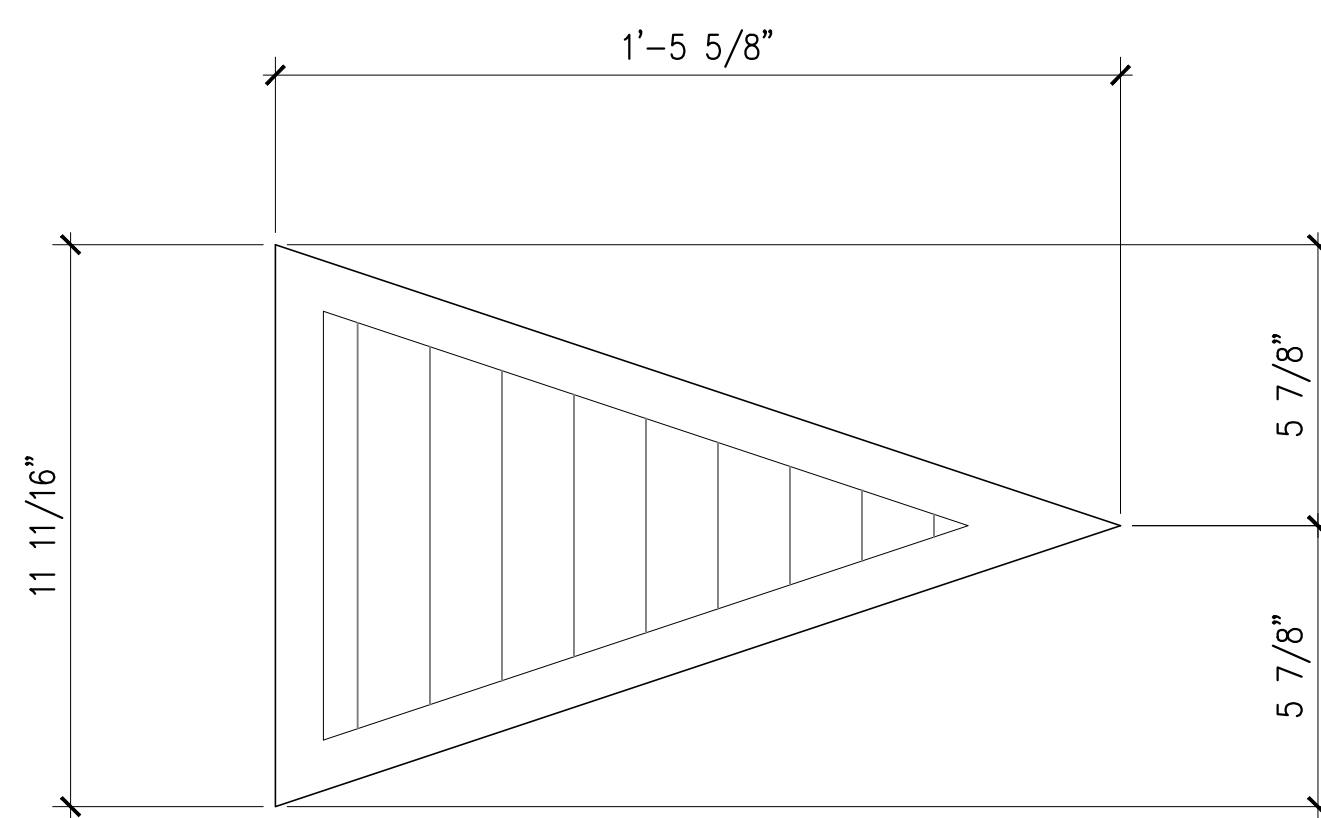
EAST ELEVATION
SCALE: 1/4"=1'-0"



SOUTH ELEVATION
SCALE: 1/4"=1'-0"



WEST ELEVATION
SCALE: 1/4"=1'-0"



1 TRIANGULAR ATTIC LOUVER VENT
SCALE: 3"=1'-0"

ELEVATION- LEGEND:

	STUCCO FINISH, TYP
	KYNAR FINISH METAL WALL PANEL, TYP
	LUX ARCHITECTURAL PANEL, TYP

ELEVATION KEY NOTES:

①	PRE-FINISHED METAL WALL PANEL, AEP SPAN U-PANEL OR APPROVED EQUAL, COLOR: SLATE GRAY
②	KAWNEER 451T ALUMINUM STOREFRONT PER WINDOW SCHEDULE, OR APPROVED EQUAL
③	KAWNEER 451T ALUMINUM STOREFRONT DOOR PER DOOR SCHEDULE, OR APPROVED EQUAL
④	ONE COAT STUCCO SYSTEM WITH ACRYLIC TOP COAT, COLOR: SHERWIN WILLIAMS, SW 7004 SNOWBOUND
⑤	LUX V-GROOVE 6" ARCHITECTURAL METAL PANEL, RANDOM PATTERN, COLORS: 40% ESPRESSO, 40% DARK ASH, 20% CEDAR
⑥	24" VERTICAL EXTERIOR LED WALL SCONCE
⑦	20" WIDE LED EXTERIOR WALL WASHER LIGHT FIXTURE
⑧	HOLLOW METAL DOOR AND FRAME, TYP
⑨	SMALL 5" SECURITY OVER DOOR LIGHT, TECH LIGHTING "PITCH" WALL MOUNTED LED FIXTURE IN CHARCOAL OR APPROVED EQUAL
⑩	BUILDING ADDRESS, SEE GENERAL SHEET FOR MORE INFORMATION
⑪	ARCHITECTURAL TRUSS
⑫	NEW TRIANGULAR WALL MOUNTED ATTIC LOUVER VENT, SEE 1/A-201
⑬	FUTURE SIGNAGE LOCATION (NOT IN CONTRACT)
⑭	12" VERTICAL EXTERIOR LED WALL SCONCE
⑮	(E) 3-TAB ARCHITECTURAL ROOF TO REMAIN
⑯	ALUMINUM BREAK METAL TO MATCH STOREFRONT DOOR AND WINDOW SYSTEM

8909 REGISTERED ARCHITECT
Michael A. Corbin
MICHAEL A. CORBIN
STATE OF WASHINGTON

July 30, 2020 - 04:35 PM

THIS DESIGN IS THE PROPERTY OF WAVE DESIGN GROUP, INC. ©2020. REPRODUCTION IN PART OR WHOLE, WITHOUT THE EXPRESS WRITTEN CONSENT OF WAVE DESIGN GROUP, INC. WILL RESULT IN PROSECUTION TO THE FULLEST EXTENT OF THE LAW. ANY AND ALL CHANGES, REVISIONS, CLARIFICATIONS, ETC. TO THESE DOCUMENTS, IN ANY WAY, WILL BE PROVIDED BY WAVE DESIGN GROUP, INC. THE DRAWINGS CONTAINED HEREIN ARE THE SOLE PROPERTY AND RESPONSIBILITY OF WAVE DESIGN GROUP, INC.

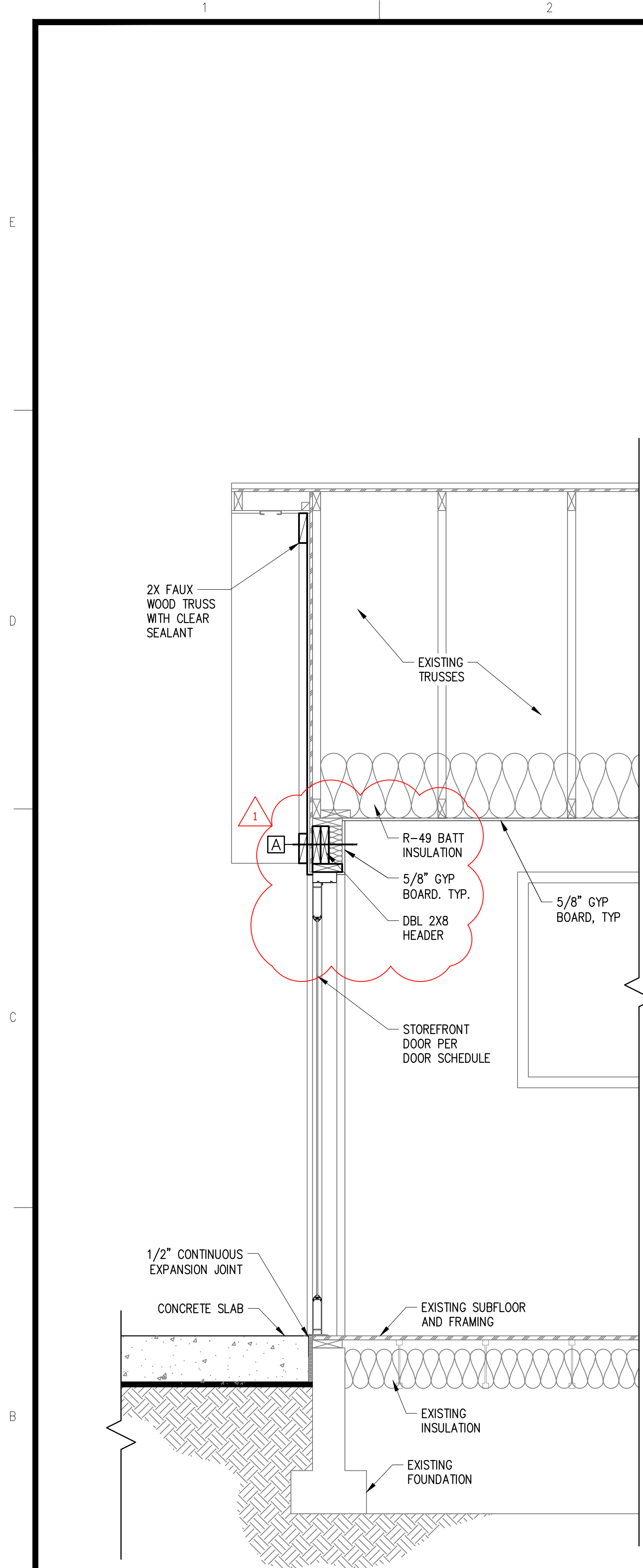
CONNELL VISITOR CENTER
PORT OF PASCO
661 S COLUMBIA AVE.
CONNELL, WA 99326

WAVE DESIGN GROUP
ARCHITECTURE • ENGINEERING • INTERIOR DESIGN
418 N. Kellogg St., Ste. B • Kennewick, WA 99336

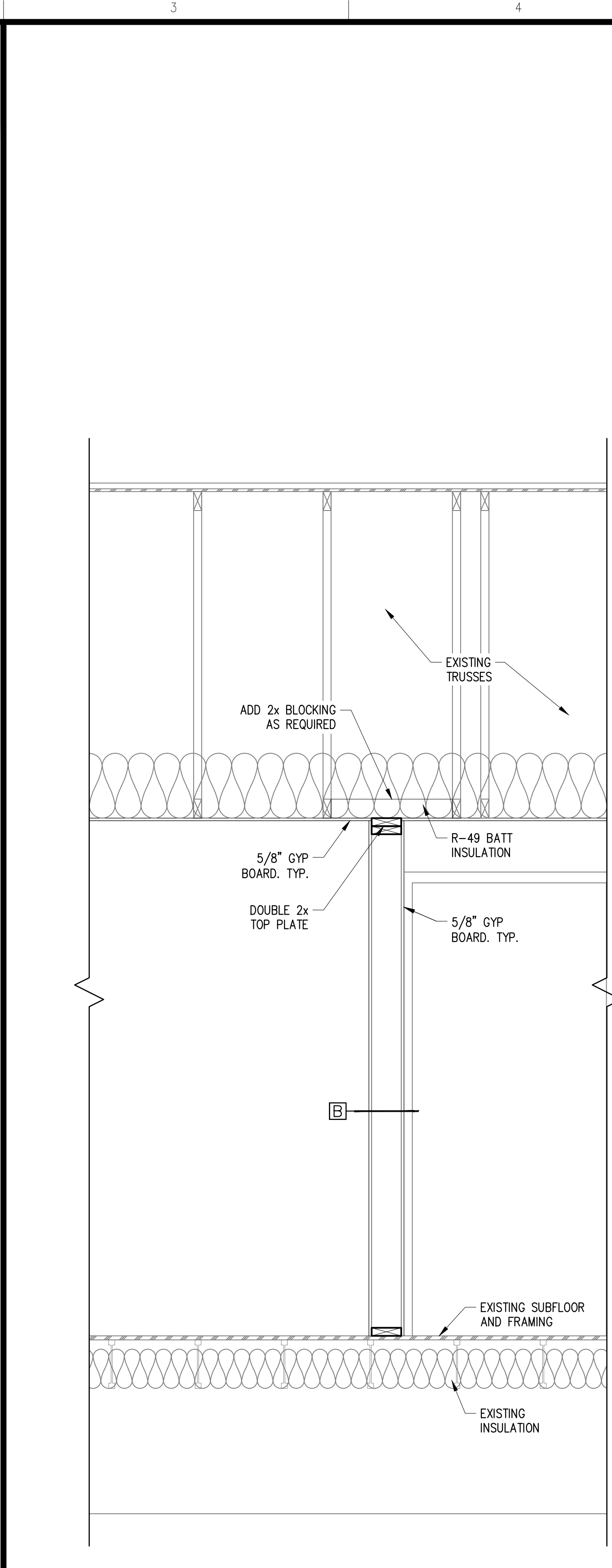
DATE:	2-13-2020	BY:	MG/KB	CHKD:	MC	JOB #:	20-011	CLNT:	1:	2:	3:
REV. #		BY		DATE		ADENDA #1					
				7-30-2020							

BUILDING ELEVATIONS

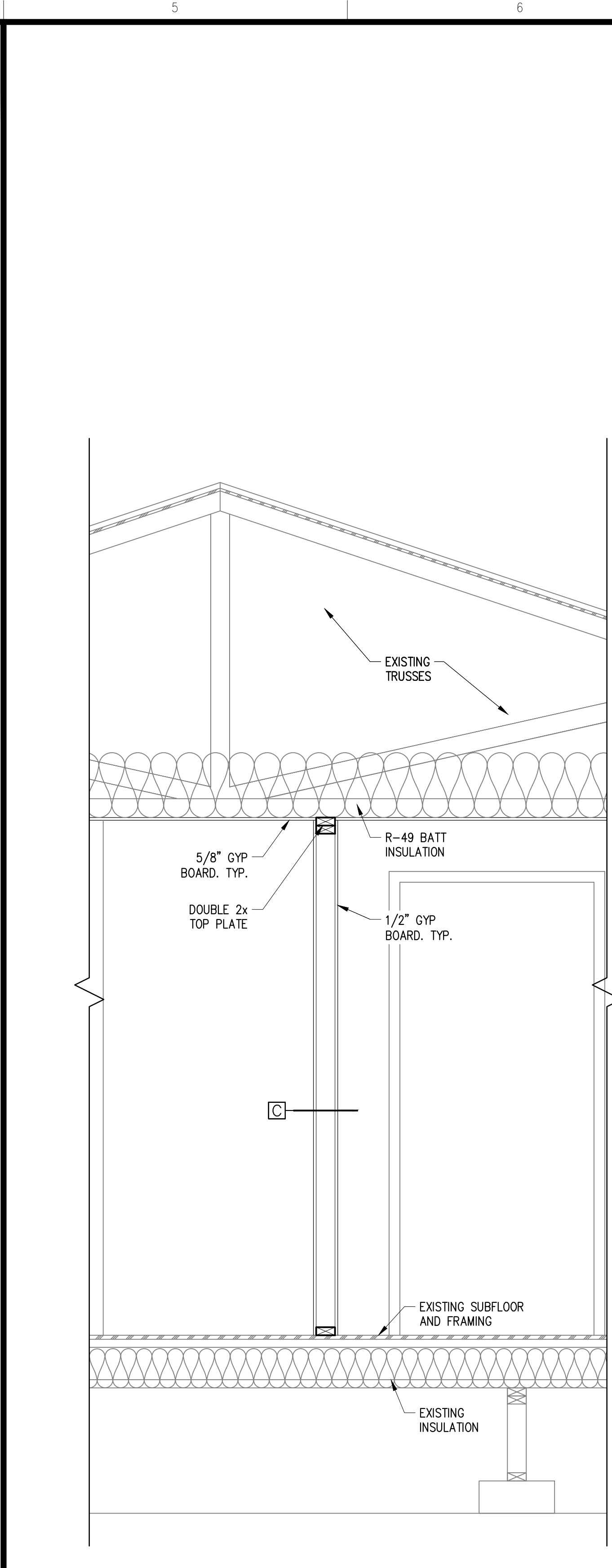
SHEET NO.:
A-201



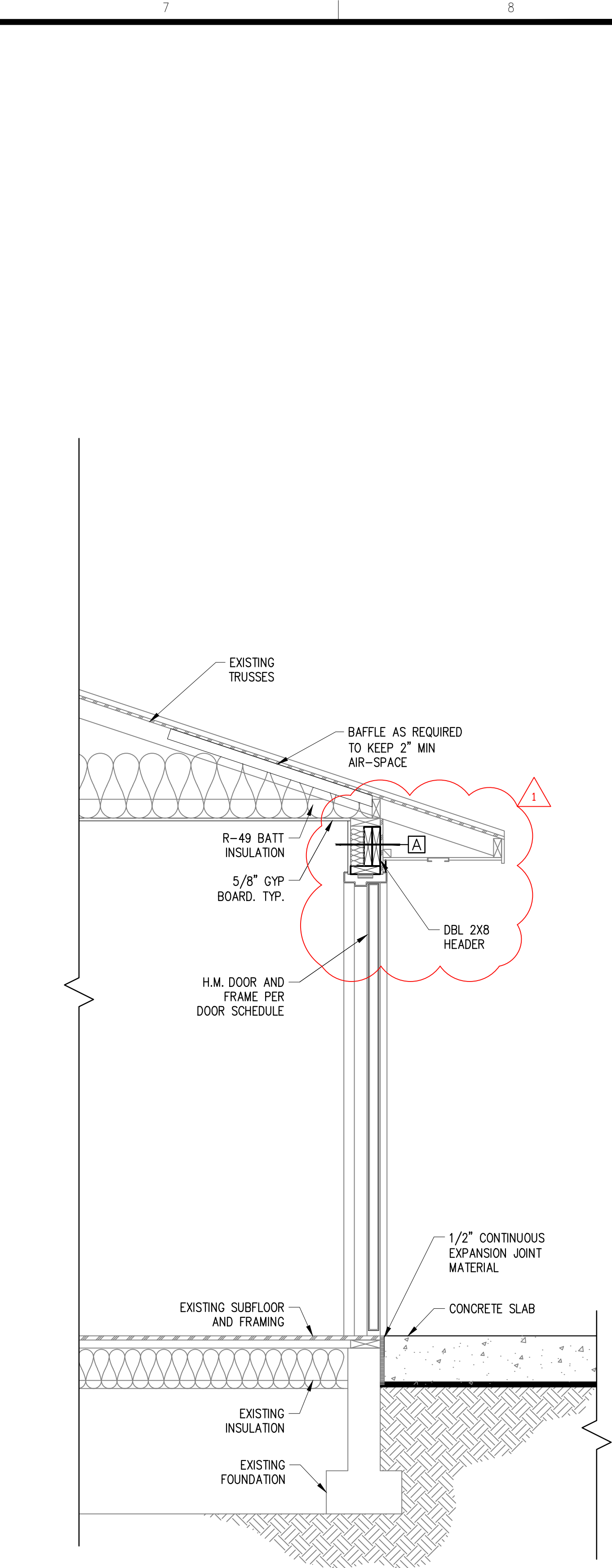
1 WALL SECTION
SCALE: 3/4"=1'-0"



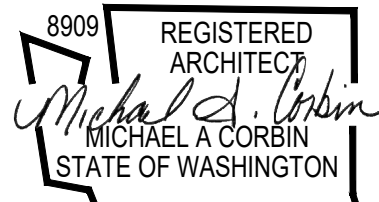
2 WALL SECTION
SCALE: 3/4"=1'-0"



3 WALL SECTION
SCALE: 3/4"=1'-0"



4 WALL SECTION
SCALE: 3/4"=1'-0"



July 30, 2020 - 04:35 PM

THIS DESIGN IS THE PROPERTY OF WAVE DESIGN GROUP, INC. © 2020. REPRODUCTION IN PART OR WHOLE, WITHOUT THE EXPRESS WRITTEN CONSENT OF WAVE DESIGN GROUP, INC. WILL RESULT IN PROSECUTION TO THE FULLEST EXTENT OF THE LAW. ANY AND ALL CHANGES, REVISIONS, CLARIFICATIONS, ETC. TO THESE DOCUMENTS, IN ANY WAY, WILL BE PROVIDED BY WAVE DESIGN GROUP, INC. THE DRAWINGS CONTAINED HEREIN ARE THE SOLE PROPERTY AND RESPONSIBILITY OF WAVE DESIGN GROUP, INC.

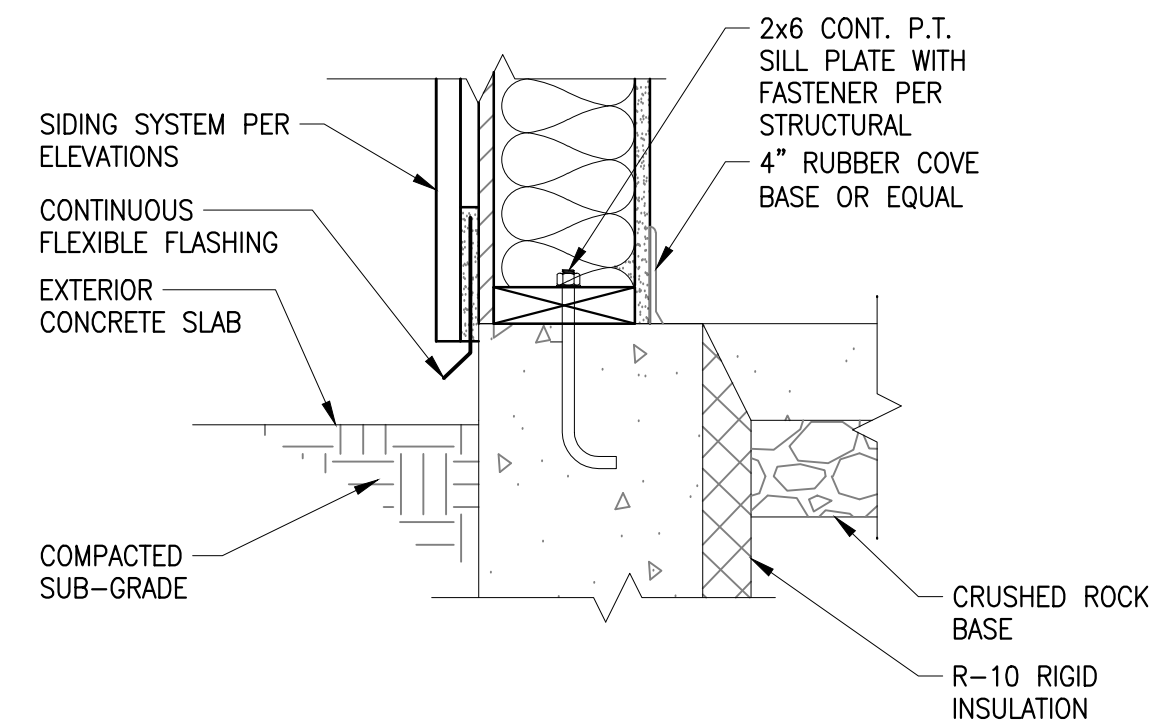
CONNELL VISITOR CENTER
PORT OF PASCO
661 S COLUMBIA AVE.
CONNELL, WA 99326



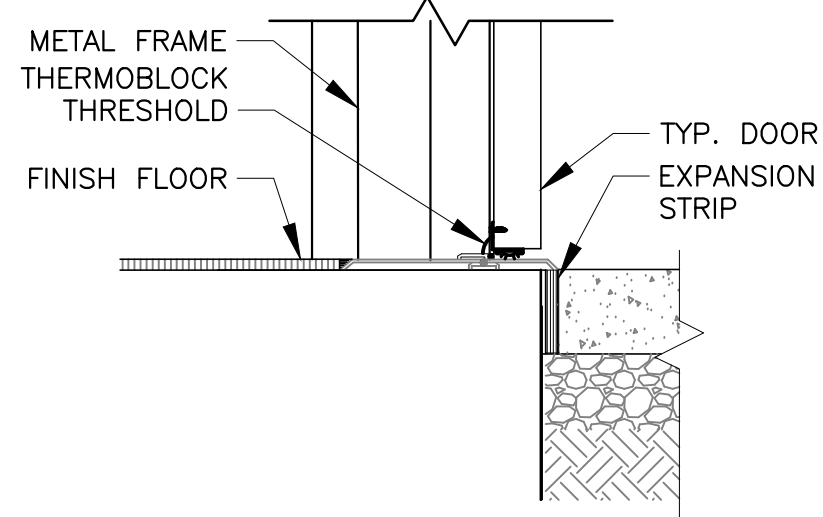
DATE:	2-13-2020
BY:	MG/KB
CHKD:	MC
JOB #:	20-011
CLNT:	1:
	2:
	3:
REV. #	ADENDA #1
BY	
DATE	7-30-2020

WALL SECTIONS

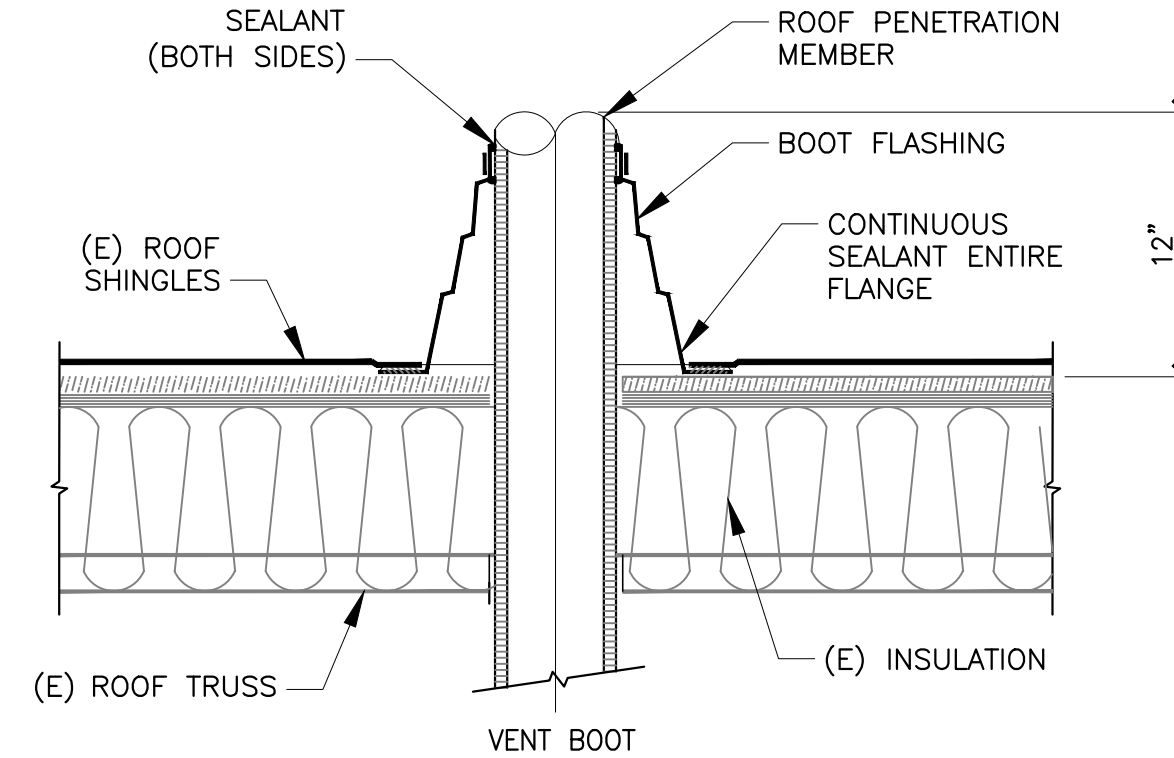
SHEET NO.:
A-311



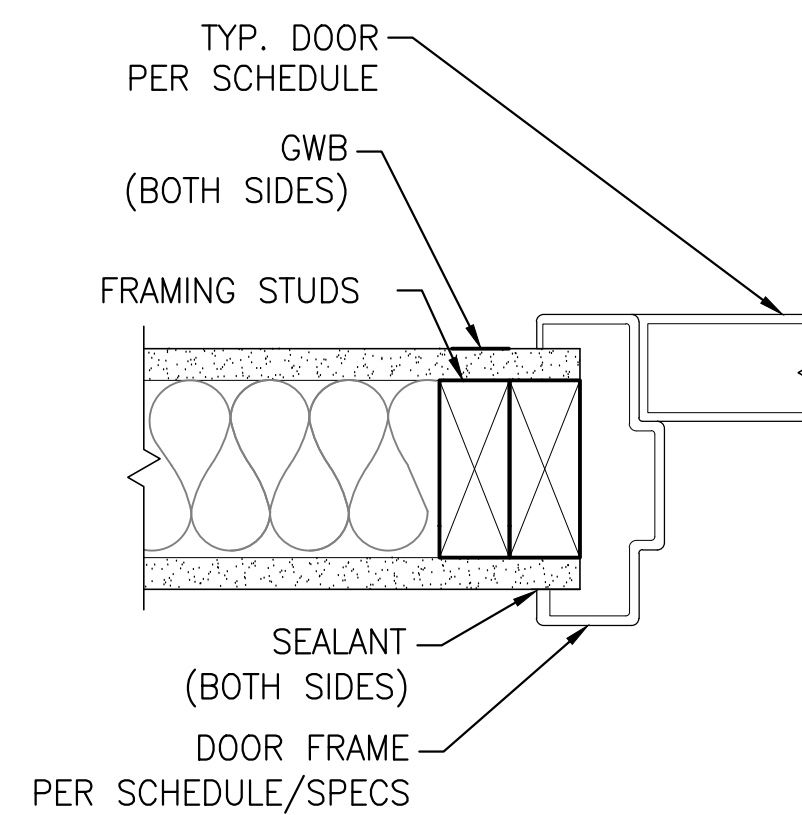
1 TYP EXTERIOR WALL BASE DETAIL
SCALE:1-1/2"=1'-0"



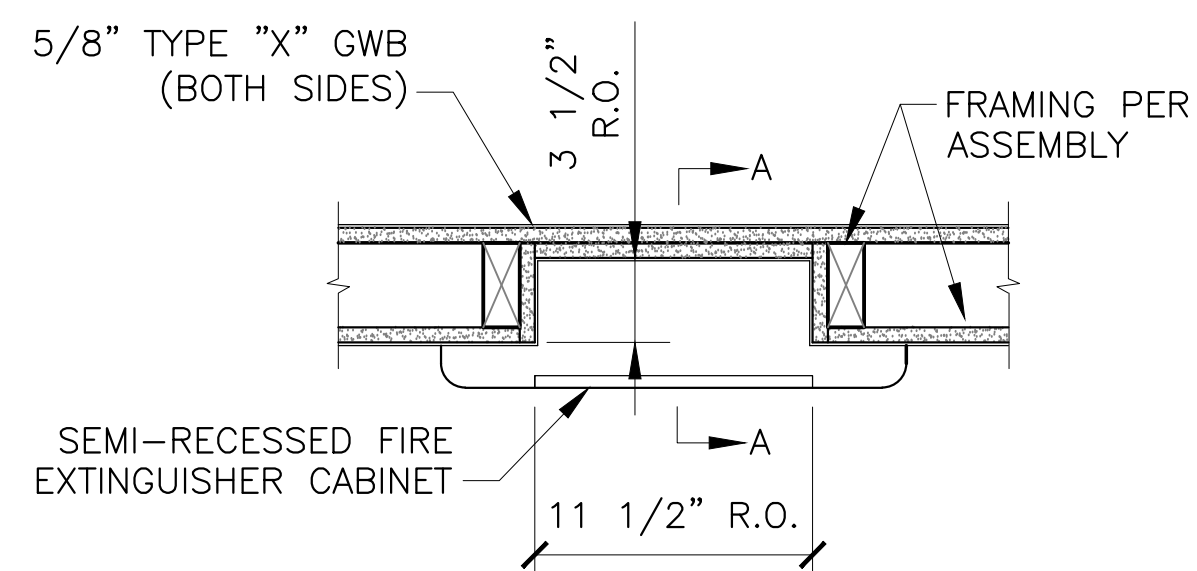
2 TYP EXTERIOR THRESHOLD DETAIL
SCALE:1-1/2"=1'-0"



3 TYP ROOF PENETRATION DETAIL
SCALE:1-1/2"=1'-0"

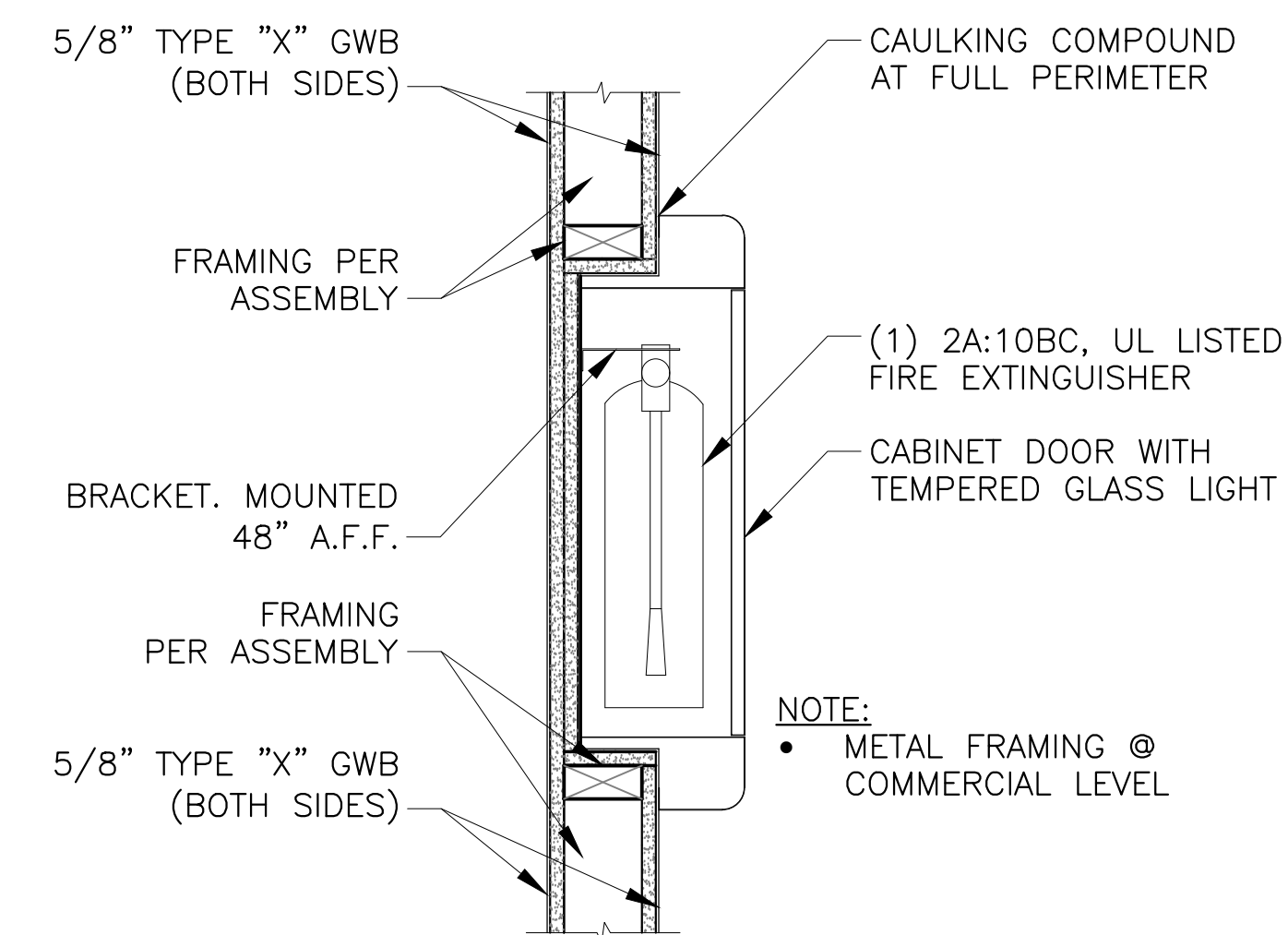


4 TYP INTERIOR DOOR JAMB DETAIL
SCALE:3"=1'-0"



NOTE:
VERIFY R.O. DIMENSIONS
WITH MANUFACTURER

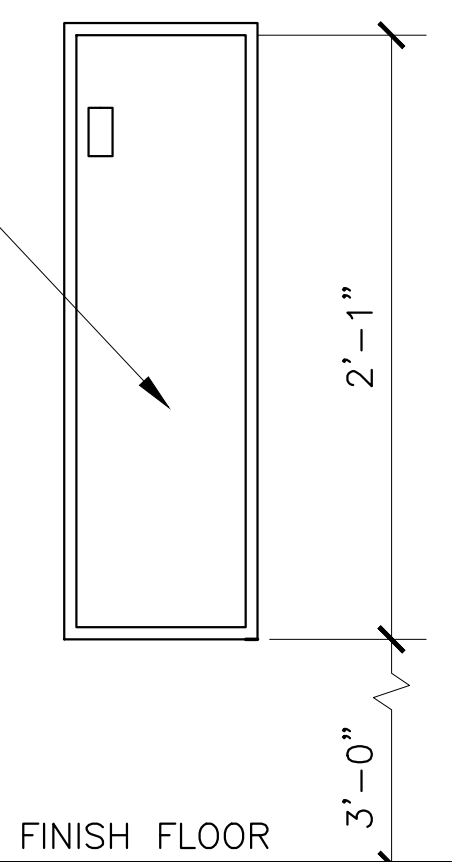
PLAN VIEW



NOTE:
METAL FRAMING @
COMMERCIAL LEVEL

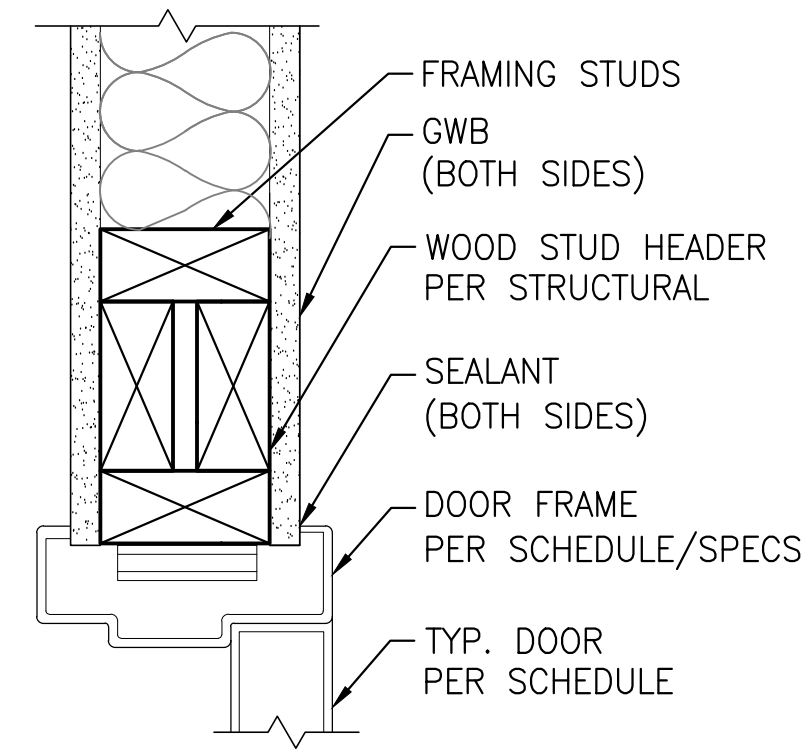
SECTION A-A

(1) 2A:10BC, UL LISTED
FIRE EXTINGUISHER

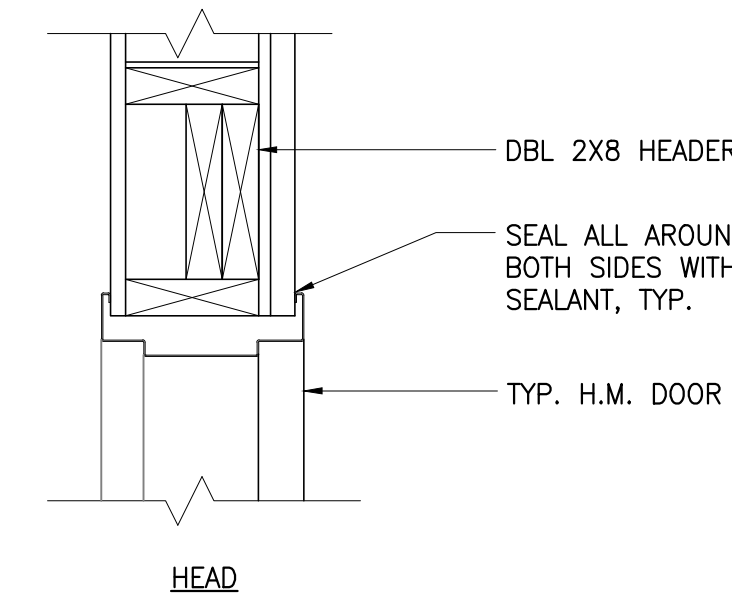


ELEVATION VIEW

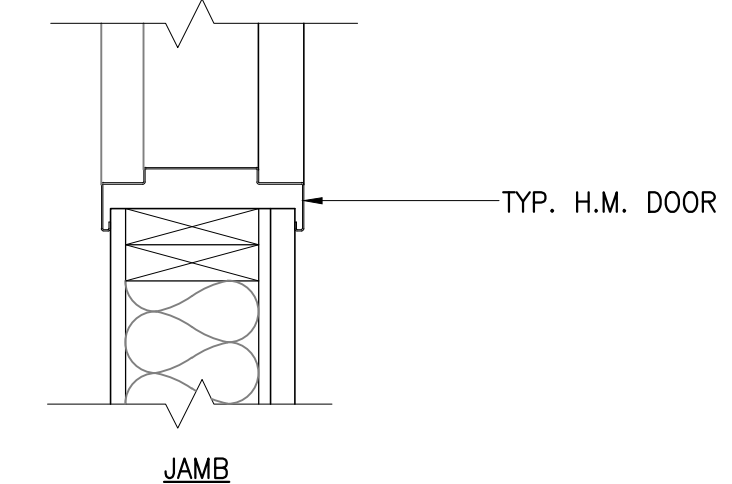
5 FIRE EXTINGUISHER DETAIL
SCALE:1-1/2"=1'-0"



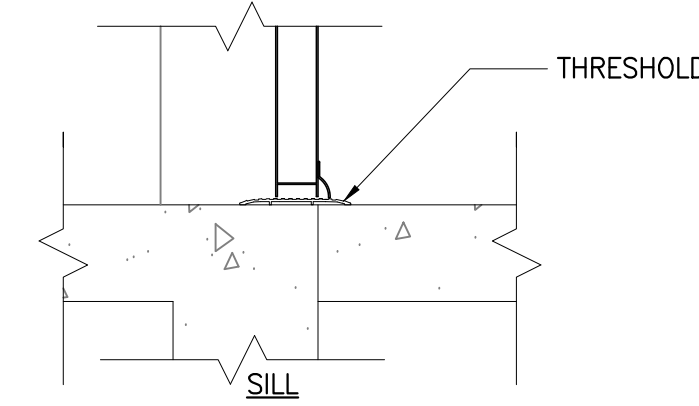
6 TYP INTERIOR DOOR HEADER DETAIL
SCALE:3"=1'-0"



HEAD

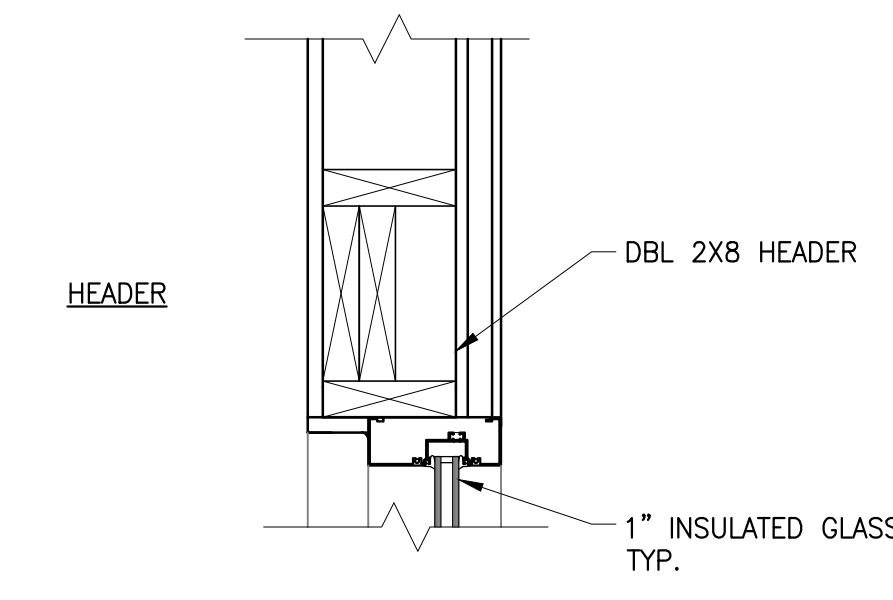


JAMB

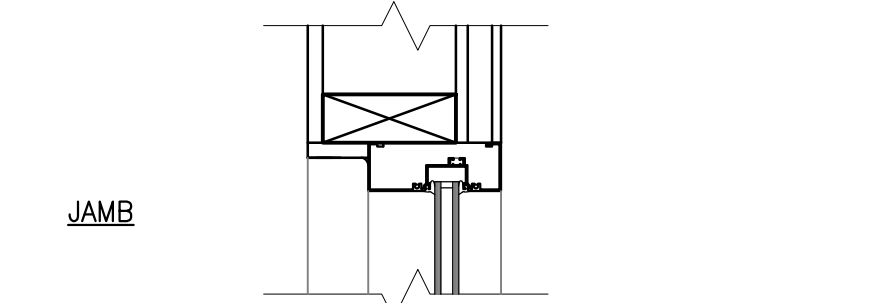


SILL

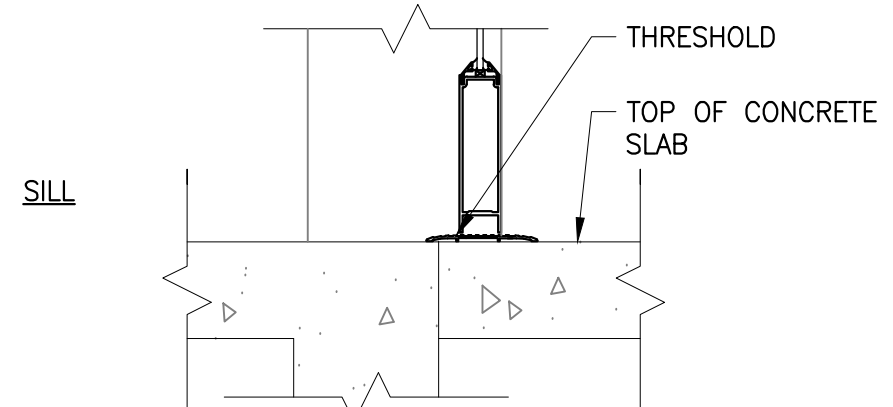
7 EXTERIOR INSULATED H.M. DOOR
SCALE:3"=1'-0"



HEADER

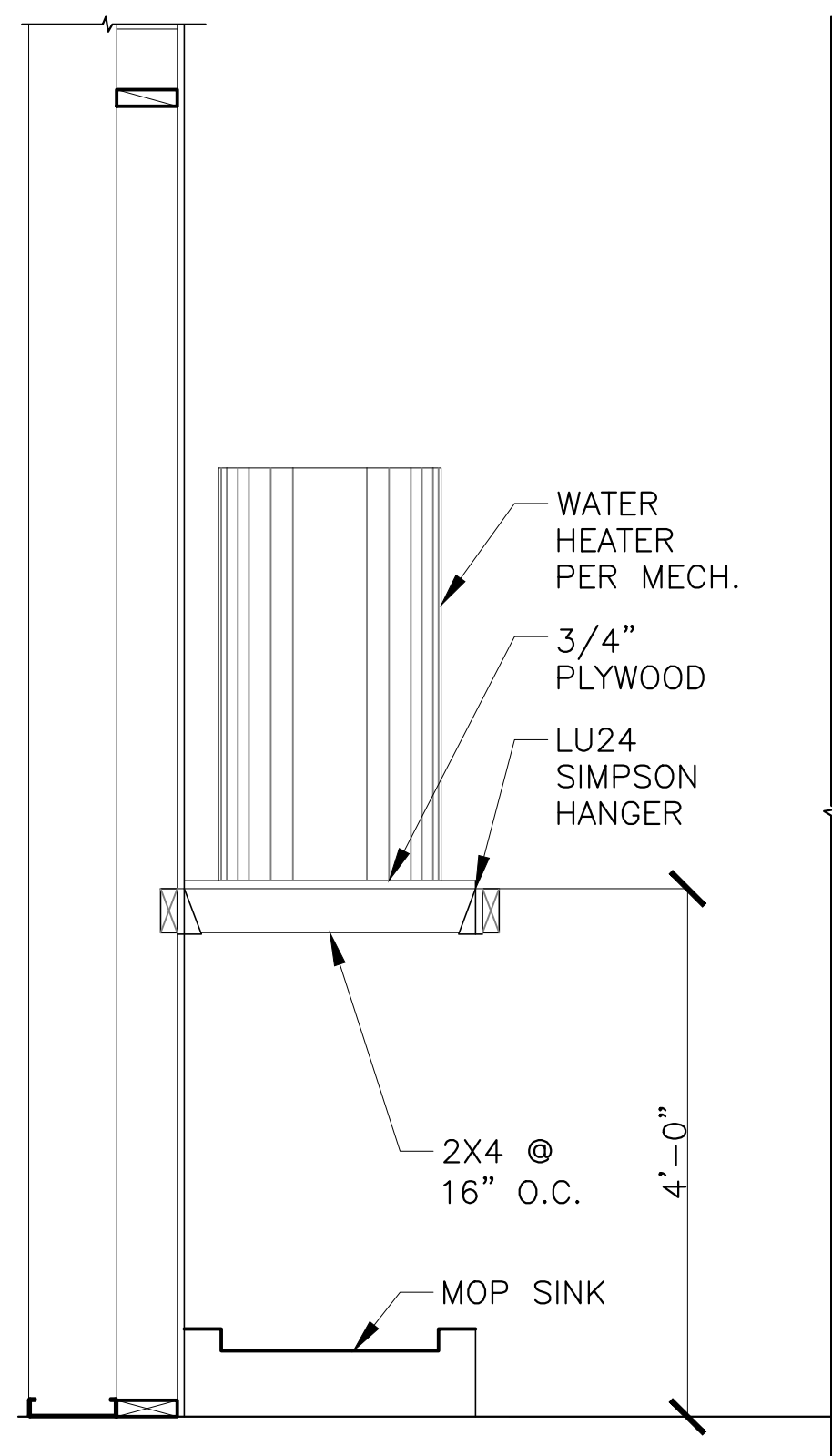


JAMB

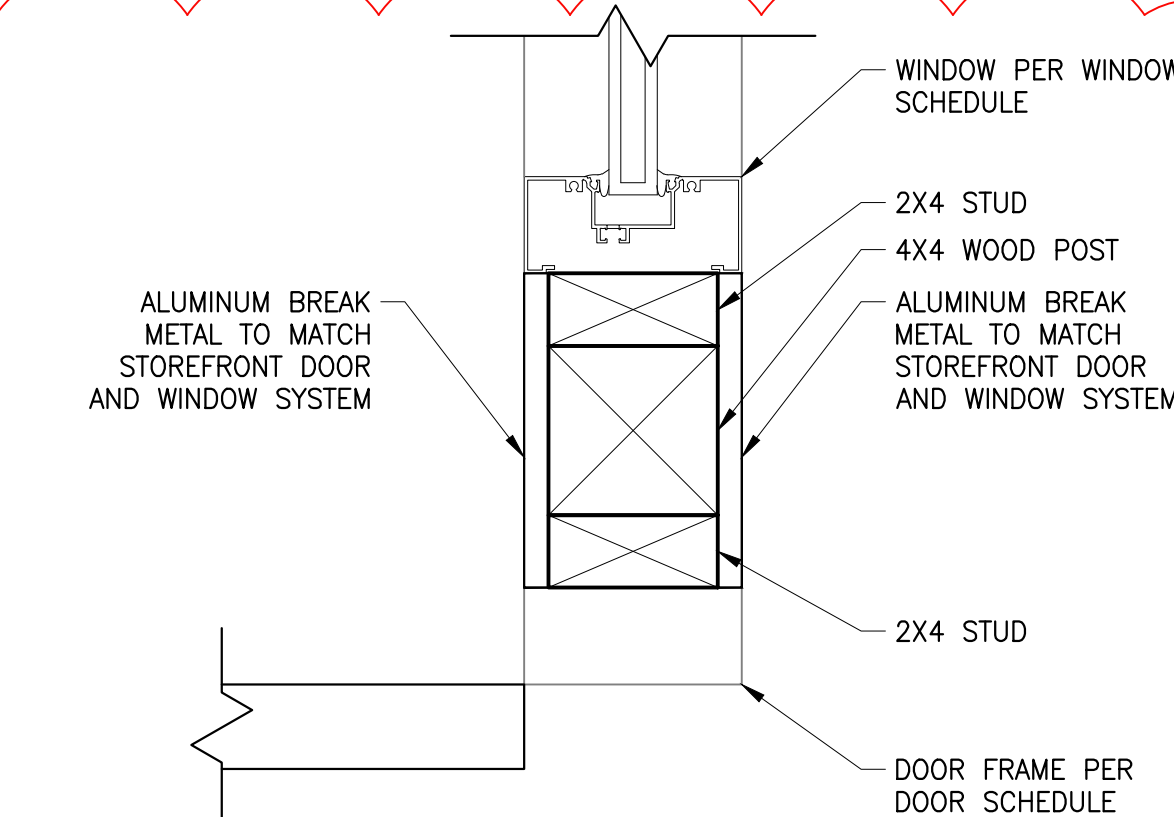


SILL

8 STOREFRONT DOOR DETAILS
SCALE:3"=1'-0"



9 WATER HEATER WITH MOP SINK DETAIL
SCALE:3/4"=1'-0"



10 EXTERIOR WALL COLUMN DETAIL
SCALE:3"=1'-0"

8909 REGISTERED ARCHITECT
MICHAEL A CORBIN
STATE OF WASHINGTON
July 30, 2020 - 04:37 PM

THIS DESIGN IS THE PROPERTY OF WAVE DESIGN GROUP INC. © 2020. REPRODUCTION IN PART OR WHOLE WITHOUT THE EXPRESS WRITTEN CONSENT OF WAVE DESIGN GROUP, INC. WILL RESULT IN PROSECUTION TO THE FULLEST EXTENT OF THE LAW. ANY AND ALL CHANGES, REVISIONS, CLARIFICATIONS ETC. TO THESE DOCUMENTS IN ANY WAY, WILL BE PROVIDED BY WAVE DESIGN GROUP, INC. THE DRAWINGS CONTAINED HEREIN ARE THE SOLE PROPERTY AND RESPONSIBILITY OF WAVE DESIGN GROUP, INC.

CONNELL VISITOR CENTER
PORT OF PASCO
661 S COLUMBIA AVE.
CONNELL, WA 99326

WAVE DESIGN GROUP
ARCHITECTURE • ENGINEERING • INTERIOR DESIGN
418 N. Kellogg St., Ste. B • Kennewick, WA 99336

DATE:	2-13-2020
BY:	M/KB
CHKD:	MC
JOB #:	20-011
CLNT:	1: 2: 3:
REV. #	1
BY	DATE
7-30-2020	
ADDNO #	

EXTERIOR/
INTERIOR
DETAILS

SHEET NO. :
A-501

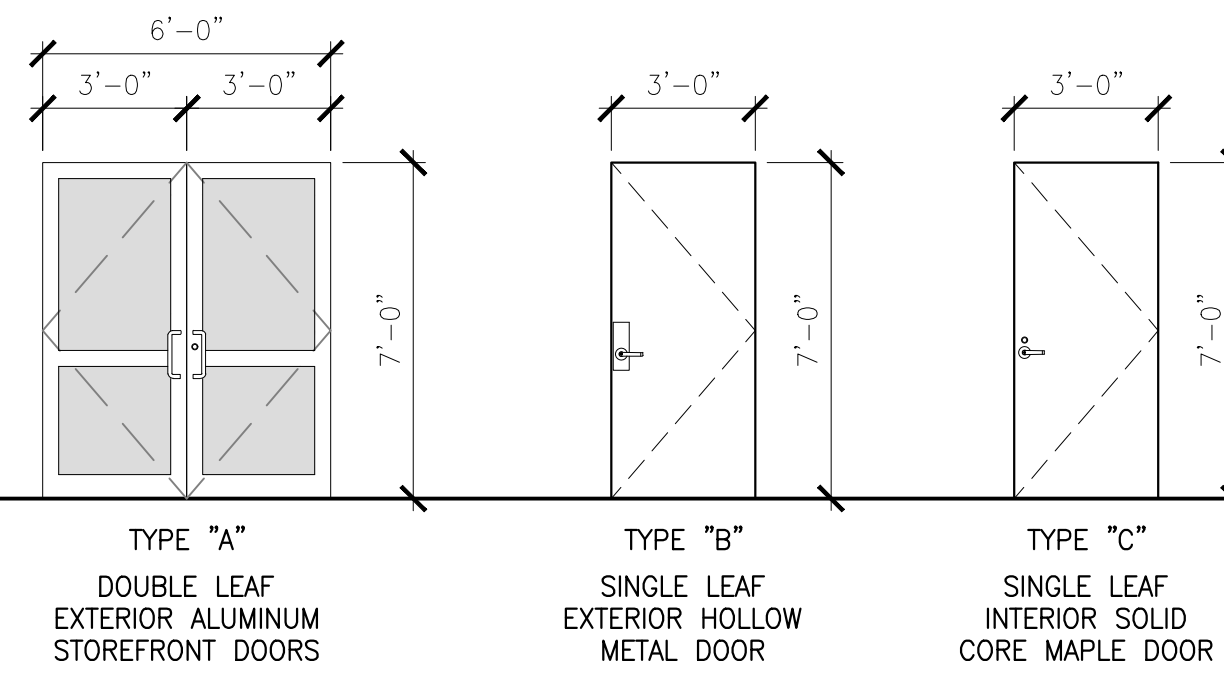
DOOR SCHEDULE

DOOR NO.	DOOR TYPE	DOOR DIMENSIONS		DOOR		FRAMES			FIRE RESISTIVE RATING	HARDWARE GROUP	LOCATION	REMARKS	DOOR NO.
		SIZE	THK.	MATERIAL	FINISH/COLOR	TYPE	MATERIAL	FINISH/COLOR					
101	A	(2)3'-0" x 7'-0"	1-3/4"	ALUMINUM	CLEAR ANODIZED	2	ALUMINUM	CLEAR ANODIZED	-	3	CONFERENCE	-	101
102	B	3'-0" x 7'-0"	1-3/4"	H.M.	PAINT	1	H.M.	PAINT	-	5	RESTROOM	-	102
103	B	3'-0" x 7'-0"	1-3/4"	H.M.	PAINT	1	H.M.	PAINT	-	5	RESTROOM	-	103
104	C	3'-0" x 7'-0"	1-3/4"	WOOD	STAIN	1	H.M.	PAINT	-	3	RECEPTION	-	104
106	C	3'-0" x 7'-0"	1-3/4"	WOOD	STAIN	1	H.M.	PAINT	-	4	RESTROOM	-	106
107	C	3'-0" x 7'-0"	1-3/4"	WOOD	STAIN	1	H.M.	PAINT	-	4	RESTROOM	-	107
108	C	3'-0" x 7'-0"	1-3/4"	WOOD	STAIN	1	H.M.	PAINT	-	3	CONFERENCE	-	108
109	C	3'-0" x 7'-0"	1-3/4"	WOOD	STAIN	1	H.M.	PAINT	-	3	HALL	-	109

NOTES:
 1. ALL DOOR HARDWARE TO MEET ADA REQUIREMENTS.
 2. CONTRACTOR TO PROVIDE SHOP DRAWINGS AND HARDWARE SUBMITTALS FOR REVIEW. (REVIEW WITH OWNER OR ARCHITECT BEFORE PROCEEDING WITH ANY WORK)
 3. LOCKS & LATCHES SHALL BE PERMITTED ON THE MAIN ENTRY TO PREVENT OPERATION OF DOORS WHERE THE FOLLOWING EXISTS. A READILY VISIBLE DURABLE SIGN TO BE POSTED ON THE EGRESS SIDE OR ON ADJACENT DOOR STATING: "THIS DOOR TO REMAIN UNLOCKED WHEN BUILDING IS OCCUPIED". THE TEXT SHALL BE 1" HIGH ON A CONTRASTING BACKGROUND. THE LOCKING DEVICE SHALL BE READILY DISTINGUISHABLE AS OPEN/CLOSED. 2015 IBC 1010.1.9.3
 4. HARDWARE GROUP: #1 PANIC HARDWARE, #2 PASSAGE, #3 LOCKING, #4 PRIVACY, #5 LOCKING WITH IN USE INDICATOR

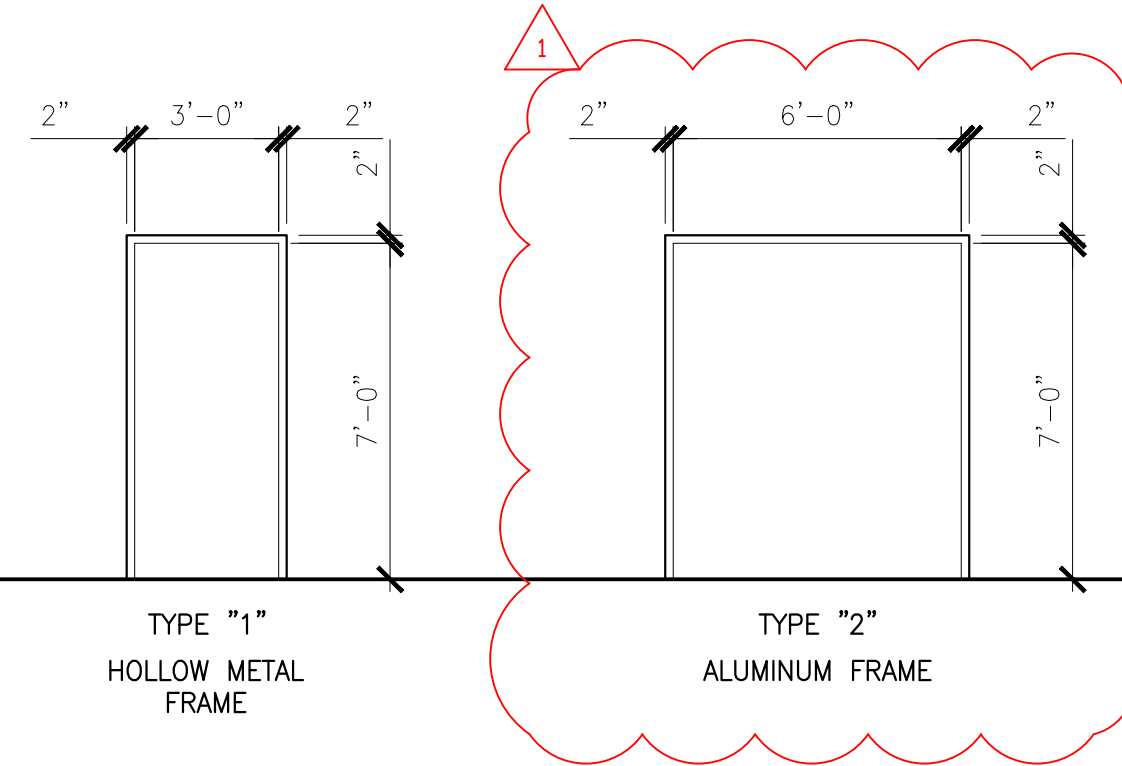
DOOR TYPES

SCALE: 1/4"=1'-0"



FRAME TYPES

SCALE: 1/4"=1'-0"



WINDOW AND RELITE SCHEDULE

WINDOW TYPE	WINDOW			FRAME		REMARKS
	SIZE	QTY.	MATERIAL	THK.	TYPE	
1	3'-0" X 7'-2"	2	TEMPERED, SOLAR BAN 70	1"	FIXED	KAWNEER, MEET OR STATE ENERGY REQUIREMENTS, SAFETY GLAZING
2	4'-10" X 4'-4"	1	CLEAR	1/4"	SLIDING	KAWNEER, SAFETY GLAZING

THERMAL GLASS SPECIFICATIONS								
SHADING COEFFICIENT	SHGC	U-VALUE WINTER NIGHT TIME		U-VALUE SUMMER DAYTIME		RELATIVE HEAT GAIN		LSG
		(W/m²·C)	(BTU/hr-ft²·F)	(W/m²·C)	(BTU/hr-ft²·F)	(W/m²·C)	(BTU/hr-ft²·F)	
0.44	0.39	1.39	0.24	1.24	0.22	289.4	91.7	1.79

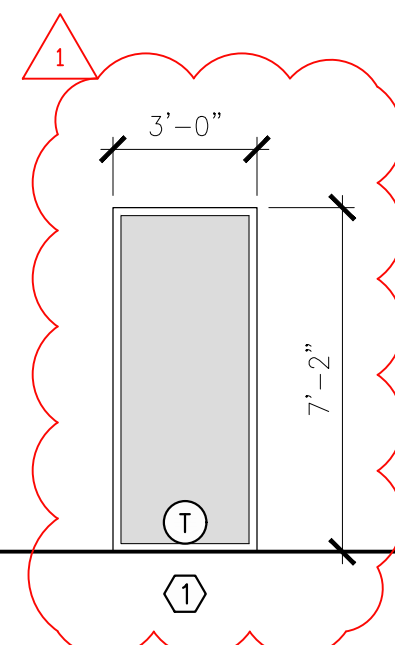
OPTICAL GLASS SPECIFICATIONS												
TRANSMITTANCE			REFLECTANCE			FADING FACTOR	COLOR PROPERTIES					
UV %	VISIBLE %	TOTAL SOLAR ENERGY %	VISIBLE (OUT %)	VISIBLE (IN %)	TOTAL SOLAR ENERGY (OUT %)		Tdw-ISO	TRANSMITTANCE	REFLECTANCE			
18	70	34	11	12	28	0.53	L*	a*	b*			
							87.17	-4.49	2.72	39.36	-1.54	-2.64

NOTES:

- ALL FINISHES, DOOR AND FRAME, SHALL BE SELECTED BY THE OWNER. CONTRACTOR SHALL SUBMIT SHOP DRAWINGS FOR APPROVAL.
- PROVIDE TEMPERED GLASS IN ALL DOORS: 24" OF DOOR SWING IN ANY ADJACENT PLAN; ANY WINDOW PANE LARGER THAN 9 S.F. WITH EXPOSED BOTTOM EDGES LESS THAN 18 ABOVE FINISH FLOOR, EXPOSED TOP EDGE MORE THAN 36" ABOVE FINISHED FLOOR AND WITHIN 36" OF ADJACENT WALKWAY, GLAZING IN GUARDS AND RAILING, GLAZING ADJACENT TO STAIRWAYS, LANDING AND RAMP THAT IS LESS THAN 60" ABOVE FINISHED FLOOR.
- CONTRACTOR TO VERIFY AND BID ACCORDINGLY FOR HEAT TREATED OR TEMPERED GLAZING AT EXTERIOR GLAZING UNITS TO RESIST THERMAL STRESSES INDUCED BY DIFFERENT SHADING WITHIN INDIVIDUAL GLASS.

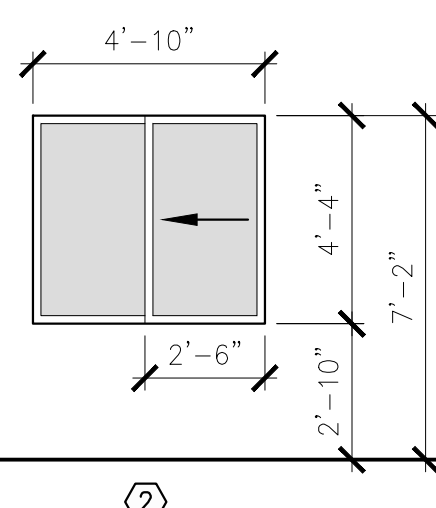
WINDOW TYPES

SCALE: 1/4"=1'-0"



RELITE TYPES

SCALE: 1/4"=1'-0"



Ⓧ = TEMPERED

8909 REGISTERED ARCHITECT
 MICHAEL A CORBIN
 STATE OF WASHINGTON
 July 30, 2020 - 04:38 PM

THIS DESIGN IS THE PROPERTY OF WAVE DESIGN GROUP, INC. ©2020. REPRODUCTION IN PART OR WHOLE, WITHOUT THE EXPRESS WRITTEN CONSENT OF WAVE DESIGN GROUP, INC. WILL RESULT IN PROSECUTION TO THE FULLEST EXTENT OF THE LAW. ANY AND ALL CHANGES, REVISIONS, CLARIFICATIONS, ETC. TO THESE DOCUMENTS, IN ANY WAY, WILL BE PROVIDED BY WAVE DESIGN GROUP, INC. THE DRAWINGS CONTAINED HEREIN ARE THE SOLE PROPERTY AND RESPONSIBILITY OF WAVE DESIGN GROUP, INC.

CONNELL VISITOR CENTER
 PORT OF PASCO
 661 S COLUMBIA AVE.
 CONNELL, WA 99326

WAVE DESIGN GROUP
 ARCHITECTURE • ENGINEERING • INTERIOR DESIGN
 418 N. Kellogg St., Ste. B • Kennewick, WA 99336

REV. #	DATE	BY	DATE
1	7-30-2020	MG/KB	
2		MC	
3			

DOOR AND WINDOW/RELITE SCHEDULE

SHEET NO.:
A-601